

Activity ID	Activity Name	OD	RD	Start	Finish	% Comp	Total Float	2014				
								Qtr 4				
								Sep	Oct	Nov	Dec	
<b>HK/2009/01 - Works Programme Rev.6E Ver4 (Data Date: 20-Sep-14)</b>												
<b>Key Dates (Contractual)</b>												
<b>Major Works</b>												
KD-0400B	Completion of Outstanding Works for Section 4 - Salt Watermains	0	0		31-Oct-14	0%	653					Completion of Outstanding Works for Section 4
KD-0610	Completion of Section 6A of Works - Gov't Offices cooling water discharge	0	0		18-Oct-14*	0%	0					Completion of Section 6A of Works - Gov't Offices cooling w
KD-0620	Completion of Section 6B of Works - Great Eagle Centre cooling water discharge	0	0		18-Oct-14*	0%	0					Completion of Section 6B of Works - Great Eagle Centre cc
KD-0630	Completion of Section 6C of Works - China Resources Bldg cooling water discharge	0	0		18-Oct-14*	0%	0					Completion of Section 6C of Works - China Resources Bldg
KD-0800	Completion of Section 8 of Works - Works in Area 6	0	0		05-Nov-14*	0%	0					Completion of Section 8 of Works - Works
KD-1200	Completion of Section 12 of Works - Works in Area 10	0	0		20-Sep-14*	0%	-164					Completion of Section 12 of Works - Works in Area 10
<b>Key Dates (Forecast Completion)</b>												
<b>Major Works</b>												
KD-0405B	Completion of Outstanding Works for Section 4 - Salt Watermains & Works in Area 3	0	0		25-Sep-14	0%	689					Completion of Outstanding Works for Section 4 - Salt Watermains & Works in Area
<b>Preliminaries</b>												
<b>Method Statement &amp; Design (Major) Approval by AECOM</b>												
PRE-2030B	ELS for CWB Stage 2	30	1	20-Mar-14 A	17-Oct-14	0%	667					ELS for CWB Stage 2
PRE-2030C	ELS for CWB Stage 3	30	30	19-Apr-14 A	16-Nov-14	0%	-191					ELS for CWB Stage 3
<b>Statutory / Authority Approval</b>												
PRE-3050B	ELS for CWB Tunneling Works Stage 2 (GEO)	28	28	21-Jul-14 A	17-Oct-14	0%	-191					ELS for CWB Tunneling Works Stage 2 (GEO)
PRE-3050C	ELS for CWB Tunneling Works Stage 3 (GEO)	28	28	20-Oct-14	16-Nov-14	0%	-191					ELS for CWB Tunneling Works
PRE-3050D	ELS for CWB Tunneling Works Stage 1b (GEO) for Bottom Up	28	1	20-Apr-11 A	20-Sep-14	0%	-162					ELS for CWB Tunneling Works Stage 1b (GEO) for Bottom Up
PRE-3310	Stage 2 Tunnel Structure Design	60	60	20-Jul-14 A	18-Nov-14	0%	635					Stage 2 Tunnel Structure De
PRE-3320	Stage 3 Tunnel Structure Design	60	60	02-Dec-14	31-Jan-15	0%	562					
<b>Watermains Connection Submission Approval by WSD/Stakeholders</b>												
PRE-3200C	Salt Water Mains (S3)	28	28	20-Sep-14*	17-Oct-14	0%	106					Salt Water Mains (S3)
PRE-3200D	Salt Water Mains (S8)	28	28	20-Sep-14*	17-Oct-14	0%	653					Salt Water Mains (S8)
PRE-3200E	Salt Water Mains (S9)	28	28	20-Sep-14*	17-Oct-14	0%	-476					Salt Water Mains (S9)
PRE-3200O	Cooling Watermains (BF)	28	28	20-Sep-14*	17-Oct-14	0%	0					Cooling Watermains (BF)
PRE-3200P	Cooling Watermains (BG)	28	28	20-Sep-14*	17-Oct-14	0%	0					Cooling Watermains (BG)
PRE-3200Q	Cooling Watermains (BI)	28	28	20-Sep-14*	17-Oct-14	0%	0					Cooling Watermains (BI)
<b>Contractor's Design (CWB Diaphragm Wall)</b>												
PRE-4030	AECOM's and GEO's approval on Detailed Design	60	60	20-Sep-14	18-Nov-14	0%	635					AECOM's and GEO's approv
<b>Contractor's Design (PS1.94)</b>												
PRE-5100C	Approval of ICCP of Cross-Harbour Mains - by AECOM & Relevant Authorities	9	10	04-Mar-11 A	30-Sep-14	100%	685					Approval of ICCP of Cross-Harbour Mains - by AECOM & Relevant Authorities
<b>Major Materials Manufacture &amp; Site Delivery</b>												
<b>Section 3 - CWB Tunnel</b>												
MM-3010	Construction of Jetty near Expo Drive East	35	35	01-Dec-14*	04-Jan-15	0%	588					
<b>TTA Implementation and Completion Summary Milestone</b>												
<b>Zone A3 (At Fenwick Pier Street)</b>												
TTAM-A3-1030	TTA Completion - Combination of Zone A3-5D & A3-4D (Sewer)	0	0		25-Oct-14	0%	-55					TTA Completion - Combination of Zone A3-5D & A3-
TTAM-A3-1040	TTA Implementation - Zone A3-2C (Sewer)	0	0	26-Oct-14		0%	-55					TTA Implementation - Zone A3-2C (Sewer)
TTAM-A3-1050	TTA Completion - Zone A3-2C (Sewer)	0	0		21-Nov-14	0%	-54					TTA Completion - Zone A3
TTAM-A3-1060	TTA Implementation - Zone A3-2D (Sewer)	0	0	22-Nov-14		0%	-54					TTA Implementation - Zo
TTAM-A3-1070	TTA Completion - Zone A3-2D (Sewer)	0	0		18-Dec-14	0%	605					
<b>Zone A5 (At Harbour Road)</b>												
TTAM-A5-1050B	TTA Completion - Zone A5-6	0	0		31-Oct-14	0%	653					TTA Completion - Zone A5-6
<b>Area X3 (Fleming Road b/w Harbour Road &amp; Convention Avenue)</b>												
TTAM-X3-1000B	TTA Completion - Zone X1-1	0	0		10-Oct-14	0%	8					TTA Completion - Zone X1-1
TTAM-X3-1010B	TTA Completion - Zone X1-2	0	0		12-Dec-14	0%	611					
TTAM-X3-1020B	TTA Completion - Zone X1-3	0	0		21-Nov-14	0%	632					TTA Completion - Zone X
TTAM-X3-1030B	TTA Completion - Zone X1-4A	0	0		31-Oct-14	0%	653					TTA Completion - Zone X1-4A
<b>Zone C (Expo Drive East)</b>												
TTAM-C3-1000B	TTA Completion - Zone C3-1	0	0		15-Nov-14	0%	638					TTA Completion - Zone C3-1
<b>Section 3 of the Works - CWB Tunnel, Slip Roads 2 &amp; 3, Works in Area 8</b>												
<b>CWB Tunnelling Works (Stage 1 : CH2947 - CH3045)</b>												

■ Remaining Work      ■ Summary Bar  
■ Actual Work  
■ Summary Bar  
■ Critical Remaining Work  
◆ Milestone

Activity ID	Activity Name	OD	RD	Start	Finish	% Comp	Total Float	2014				
								Qtr 4				
								Sep	Oct	Nov	Dec	
<b>Stage 1 - Tunnel Structure Works (Bay 1 to Bay 7 : Ch2947 - Ch 3045)</b>												
<b>Tunnel Structure at Stage 1A &amp; 1B (CH2947 - CH3045)</b>												
S3A-TS-2000	Tunnel Structures Works including Waterproofing and OHVD	300	99	28-Feb-14 A	27-Dec-14	0%	180					
<b>CWB Tunnelling Works (Stage 2 : Ch3045 - Ch3129)</b>												
<b>Stage 2 - Foundation Works (Bottom Up Method : CH3045 - CH3129 / CH120 - CH225)</b>												
S3B-FW-1040C	ELS for Exhaust Duct (~-5.0mPD)	170	86	27-Jun-14 A	14-Dec-14	0%	531					ELS
S3B-FW-1090	Installation of Dewatering Well (assume 18 nos.)	60	14	30-Jun-14 A	03-Oct-14	76.67%	-129					Installation of Dewatering Well (assume 18 nos.)
S3B-FW-1095	Pumping Test of Stage 2 (as at excavation approaching to -5.0mPD)	13	13	04-Oct-14	16-Oct-14	0%	-129					Pumping Test of Stage 2 (as at excavation approaching to -5.0mPD)
<b>Stage 2 - Excavation Works (For Bottom Slab Construction : CH3045 - CH3129)</b>												
S3B-EW-1000A	Stage 2 ELS - excavate to approx. +0.5mPD and installation of 1st layer strut/waling	84	14	19-May-14 A	03-Oct-14	0%	-162					Stage 2 ELS - excavate to approx. +0.5mPD and installation of 1st layer strut/waling
S3B-EW-1000B	Stage 2 ELS - excavate to approx. -3.0mPD and installation of 2nd layer strut/waling (15,000m <sup>3</sup> )	46	46	04-Oct-14	18-Nov-14	0%	-162					Stage 2 ELS - excavate to approx. -3.0mPD and installation of 2nd layer strut/waling (15,000m <sup>3</sup> )
S3B-EW-1000C	Stage 2 ELS - excavate to approx. -6.4mPD and installation of 3rd layer strut/waling (16,500m <sup>3</sup> )	70	70	19-Nov-14	27-Jan-15	0%	-162					Stage 2 ELS - excavate to approx. -6.4mPD and installation of 3rd layer strut/waling (16,500m <sup>3</sup> )
<b>Stage 2 - Tunnel Structure Works (Bay 8 to Bay 10 : CH3045 - CH3129)</b>												
S3B-TS-1000	Bay 10 Top Slab	25	8	20-Sep-14	27-Sep-14	0%	-141					Bay 10 Top Slab
S3B-TS-2000A	Construction of Exhaust Duct (CH2988 - CH3045)	48	48	15-Dec-14	31-Jan-15	0%	531					
<b>CWB Tunnelling Works (Stage 3 : Ch3129 - Ch3245)</b>												
<b>Stage 3 - Reclamation Works</b>												
<b>Demolition Works - Stage 3</b>												
DW3-1000	Demolition of Existing 10nos. Pump Houses along Convention Avenue	90	11	21-May-14 A	30-Sep-14	0%	343					Demolition of Existing 10nos. Pump Houses along Convention Avenue
DW3-1020	Demolition of Remaining Existing Expo Drive East Bridge at Southern Bound	24	11	01-Sep-14 A	30-Sep-14	0%	-235					Demolition of Remaining Existing Expo Drive East Bridge at Southern Bound
<b>Stage 3 - Foundation Works</b>												
S3C-FW-1050C	Stage 3 Pre-bored H-pile (Phase 4 - 160 nos w/4~5 rigs)	128	124	21-Jul-14 A	21-Jan-15	0%	-267					
<b>Stage 3 - Excavation Works (Ch3129 - Ch3245)</b>												
<b>Excavation Works at Stage 3</b>												
S3C-EW-1000	Excavation to +0mPD (approx 21,400m <sup>3</sup> ) including strut/waling installation	40	37	15-Sep-14 A	26-Oct-14	0%	-270					Excavation to +0mPD (approx 21,400m <sup>3</sup> ) including strut/waling installation
S3C-EW-1010	Excavation to -4.0 mPD (approx 26,600m <sup>3</sup> ) including strut/waling installation	96	96	27-Oct-14	30-Jan-15	0%	-270					Excavation to -4.0 mPD (approx 26,600m <sup>3</sup> ) including strut/waling installation
S3C-EW-1010C	Installation of Dewatering Well (24nos.) and Pumping Test	45	46	16-Dec-14	30-Jan-15	0%	-267					Installation of Dewatering Well (24nos.) and Pumping Test
<b>Section 4 of the Works - Salt Water Mains, Works in Area 3</b>												
<b>S8B (DN800) Salt Watermains</b>												
<b>Testing and Commissioning</b>												
S4-1500	Pressure Test of S8B	6	6	20-Sep-14	25-Sep-14	0%	675					Pressure Test of S8B
S4-1510	Cleaning of S8B	7	7	26-Sep-14	02-Oct-14	0%	675					Cleaning of S8B
S4-1520	Connection to Existing Mains (S8B)	7	7	18-Oct-14	24-Oct-14	0%	653					Connection to Existing Mains (S8B)
<b>S9 (DN450) Salt Watermains &amp; Sewer</b>												
<b>Testing and Commissioning</b>												
S4-2500	Pressure Test of S9	6	6	20-Sep-14	25-Sep-14	0%	682					Pressure Test of S9
S4-2510	Cleaning of S9	7	7	26-Sep-14	02-Oct-14	0%	682					Cleaning of S9
S4-2520	Connection to Existing Mains (S9)	7	7	18-Oct-14	24-Oct-14	0%	660					Connection to Existing Mains (S9)
<b>Section 6A of the Works - Cooling Water Discharge System (3 nos. Govt Towers)</b>												
S6A-1200	Zone X1-1 - CHBF (11m)	21	21	20-Sep-14	10-Oct-14	0%	-14					Zone X1-1 - CHBF (11m)
S6A-1210	Zone X1-2 - CHBF (5m)	21	21	22-Nov-14	12-Dec-14	0%	-77					Zone X1-2 - CHBF (5m)
S6A-1220	Zone X1-3 - CHBF (7m)	21	21	01-Nov-14	21-Nov-14	0%	-77					Zone X1-3 - CHBF (7m)
S6A-1230	Zone X1-4A - CHBF (21m) & S3 (21m) Connection Point	24	42	20-Jan-14 A	31-Oct-14	100%	-77					Zone X1-4A - CHBF (21m) & S3 (21m) Connection Point
S6A-1240	Zone C3-1 - CHBF (16m) Test and Connection Point	60	57	22-Jun-14 A	15-Nov-14	0%	-50					Zone C3-1 - CHBF (16m) Test and Connection Point
<b>Section 6B of the Works - Cooling Water Intake &amp; Discharge System (Great Eagle / Harbour Centre)</b>												
S6B-1220	Zone C3-1 - CHBG (16m) Test and Connection Point	60	57	22-Jun-14 A	15-Nov-14	0%	-50					Zone C3-1 - CHBG (16m) Test and Connection Point
<b>Section 6C of the Works - Cooling Water Discharge System (China Resources Building)</b>												
S6C-1600	Zone C3-1 - CHBI (16m) Test and Connection Point	60	57	22-Jun-14 A	15-Nov-14	0%	-50					Zone C3-1 - CHBI (16m) Test and Connection Point
<b>Common Works for Sections 6A, 6B &amp; 6C</b>												
<b>Discharge Outfall Construction</b>												
S6-1030	Connection of the Completed Cooling Mains to Precast Outfall Unit	0	0		15-Nov-14	0%	-24					Connection of the Completed Cooling Mains to Precast Outfall Unit
S6-1040	Reinstatement of Existing Seawall after Connection	30	30	16-Nov-14	15-Dec-14	0%	608					Reinstatement of Existing Seawall after Connection
<b>Section 8 of the Works - Works in Area 6 (Utilities other than Watermains in Fenwick Pier Street)</b>												

■ Remaining Work     ■ Summary Bar  
■ Actual Work  
■ Summary Bar  
■ Critical Remaining Work  
◆ Milestone

CEDD CONTRACT NO. HK/2009/01  
 Wan Chai Development Phase II - Central-Wan Chai Bypass at HKCEC (Contract 1)  
 WORKS PROGRAMME Rev.6C - 3 Month Programme starting from 20-Sep-14

Activity ID	Activity Name	OD	RD	Start	Finish	% Comp	Total Float	2014				
								Qtr 4				
								Sep	Oct	Nov	Dec	
<b>Sewerage Works</b>												
S8-1030	Zone A3-5D & A3-4D	23	29	10-Jan-14 A	25-Oct-14	100%	-45	Zone A3-5D & A3-4D				
S8-1040	Zone A3-2C	23	23	27-Oct-14	21-Nov-14	0%	-45	Zone A3-2C				
S8-1050	Zone A3-2D	23	23	22-Nov-14	18-Dec-14	0%	-45					
S8-2500	CCTV Survey	1	1	19-Dec-14	19-Dec-14	0%	-45					
<b>Section 9 of the Works - Remaindar of the Works</b>												
<b>Box Culvert Construction</b>												
S9-1030	Construction of Precast Bay 1	76	76	01-Oct-14	16-Dec-14	0%	-235					
S9-1040A	Installation of Sheet Pile / ELS and Construction for Bay 7	180	203	07-Sep-14 A	10-Apr-15	0%	-235					
S9-1040B	Installation of Sheet Pile / ELS and Construction for Bay 2	180	182	11-Oct-14	10-Apr-15	0%	-235					
<b>Waterworks in Area 9</b>												
<b>Salt Water Mains (S3, S5A &amp; S5B)</b>												
S9-5500A	Zone X1-1 - S3 (5m)	0	0		10-Oct-14	0%	8	◆ Zone X1-1 - S3 (5m)				
S9-5500B	Zone X1-2 - S3 (5m)	0	0		12-Dec-14	0%	36					
S9-5500C	Zone X1-3 - S3 (5m)	0	0		21-Nov-14	0%	57	◆ Zone X1-3 - S3 (5m)				
<b>Fresh Water Mains (F3)</b>												
S9-7040	Zone X1-1 - F3 (5m)	0	0		10-Oct-14	0%	99	◆ Zone X1-1 - F3 (5m)				
S9-7050	Zone X1-2 - F3 (5m)	0	0		12-Dec-14	0%	36					
S9-7060	Zone X1-3 - F3 (5m)	0	0		21-Nov-14	0%	57	◆ Zone X1-3 - F3 (5m)				
<b>Section 12 of the Works - Works in Area 10 (other than Section 4)</b>												
VO106-1000	Demolition of Existing HKCEC Pump House in Area 10 & 11 (Kiu Lok Portion - Variation Ord	100	11	26-May-14 A	30-Sep-14	0%	150	Demolition of Existing HKCEC Pump House in Area 10 & 11 (Kiu Lok Portion				
<b>Section 13 of the Works - Works in Area 11 (other than Section 11)</b>												
S13-3000	Completion of Backfilling to +5.0mPD	0	0		30-Sep-14	0%	150	◆ Completion of Backfilling to +5.0mPD				
VO106-2000	Demolition of Existing HKCEC Pump House in Area 10 & 11 (Kiu Lok Portion - Variation Ord	0	0		30-Sep-14	0%	150	◆ Demolition of Existing HKCEC Pump House in Area 10 & 11 (Kiu Lok Portion				
<b>Section 9A of the Works - Landscape Softworks in Area 9</b>												
S9A-1000	Transplanting at Expo Drive East and Convention Avenue Junction	180	180	20-Sep-14	18-Mar-15	0%	150					

■ Remaining Work     ■ Summary Bar  
■ Actual Work  
■ Summary Bar  
■ Critical Remaining Work  
◆ Milestone

CEDD CONTRACT NO. HK/2009/01  
 Wan Chai Development Phase II - Central-Wan Chai Bypass at HKCEC (Contract 1)  
WORKS PROGRAMME Rev.6C - 3 Month Programme starting from 20-Sep-14

Activity ID	Activity Name	Rem Dur	Start	Finish	Late Start	Late Finish	Total Float	2014															
								July					August				September			October			
								23	30	07	14	21	28	04	11	18	25	01	08	15	22	29	06
<b>3MRP - Jul 2014 to Oct 2014</b>																							
<b>01 - CONTRACT DATES</b>																							
<b>01.2 - Possession of Site</b>																							
0120-3300	Possession to Portion X11A	0	02-Sep-14*		02-Sep-14		0																
<b>02 - PRE-CONSTRUCTION WORKS</b>																							
<b>02.2 - Contractor's Submission</b>																							
0220-1580	Noise Enclosure/Barrier - Steel Material No Adverse Comment	0	02-Jun-14 A	30-Jun-14 A	11-Aug-19	11-Aug-19																	
<b>02.3 - Method Statement / Shop Drawings</b>																							
0230-1590	MS Bridge F1A/F2A Int. Noise Semi Enclosure - ER Review / Comment	0	26-May-14 A	11-Jul-14 A	30-Nov-15	30-Nov-15																	
0230-1600	MS Bridge F1A/F2A Int. Noise Semi Enclosure - Resubmission	0	01-Jun-14 A	11-Jul-14 A	30-Nov-15	30-Nov-15																	
0230-1610	MS Bridge F1A/F2A Int. Noise Semi Enclosure - No Adverse Comment	12	12-Jul-14 A	31-Jul-14	30-Nov-15	11-Dec-15	498																
0230-1420	MS Permanent Noise Barrier Cantilever - Submission	6	10-Feb-14 A	25-Jul-14	26-Aug-14	31-Aug-14	37																
0230-1430	MS Permanent Noise Barrier Cantilever - ER Review & Comment	12	26-May-14 A	06-Aug-14	01-Sep-14	12-Sep-14	37																
0230-1440	MS Permanent Noise Barrier Cantilever - Resubmission	12	10-Jun-14 A	18-Aug-14	13-Sep-14	24-Sep-14	37																
0230-1450	MS Permanent Noise Barrier Cantilever - No Adverse Comment	15	19-Aug-14	02-Sep-14	25-Sep-14	09-Oct-14	37																
0230-1820	MS Bridge Demolition Pier E3 to P20 - Submission	18	20-Jul-14 A	06-Aug-14	28-Jul-14	14-Aug-14	8																
0230-1830	MS Bridge Demolition Pier E3 to P20 - ER Review & Comment	12	07-Aug-14	18-Aug-14	15-Aug-14	26-Aug-14	8																
0230-1840	MS Bridge Demolition Pier E3 to P20 - Resubmission	12	13-Aug-14	24-Aug-14	21-Aug-14	01-Sep-14	8																
0230-1850	MS Bridge Demolition Pier E3 to P20 - No Adverse Comment	18	25-Aug-14	11-Sep-14	02-Sep-14	19-Sep-14	8																
0230-1740	MS Temporary Bridge TB - Submission	28	01-Aug-14*	28-Aug-14	28-Aug-14	24-Sep-14	27																
0230-1750	MS Temporary Bridge TB - ER Review & Comment	18	29-Aug-14	15-Sep-14	25-Sep-14	12-Oct-14	27																
0230-1760	MS Temporary Bridge TB - Resubmission	18	16-Sep-14	03-Oct-14	13-Oct-14	30-Oct-14	27																
0230-1770	MS Temporary Bridge TB - ER Approval	28	04-Oct-14	31-Oct-14	31-Oct-14	27-Nov-14	27																
<b>02.4 - Contractor's Design and Build Items</b>																							
0240-1046	Temp Bridge "TD" - Tower Fabrication Pier F5, F6 and F7	0	01-Jun-14 A	10-Jul-14 A	28-Jul-14	28-Jul-14																	
0240-1047	Temp Bridge "TD" - Beam Fabrication Pier F5 to F8	0	01-Jun-14 A	14-Jul-14 A	19-Jul-14	19-Jul-14																	
0240-1048	Temp Bridge "TD" - Tower Fabrication Pier F11, F12, F13 and F14	0	27-May-14 A	09-Jul-14 A	31-Jul-14	31-Jul-14																	
0240-1049	Temp Bridge "TD" - Beam Fabrication Pier F10 to F15	0	24-May-14 A	14-Jul-14 A	31-Jul-14	31-Jul-14																	
0240-1110	Int. Noise Enclosure Structural Design - ER Review/Resubmission	14	17-Jan-14 A	02-Aug-14	28-Nov-15	11-Dec-15	496																
0240-1111	Int. Noise Enclosure Structural Design - No Adverse Comment	28	03-Aug-14	30-Aug-14	12-Dec-15	08-Jan-16	496																
0240-1113	Int. Noise Enclosure Structural - Shop Drawings Bridge F1A/F2A	0	02-Jan-14 A	11-Jul-14 A	03-Sep-14	03-Sep-14																	
0240-1115	Int. Noise Enclosure - Fabricate Column (32 nos.) Bridge F1A/F2A	0	14-Apr-14 A	08-Jul-14 A	03-Sep-14	03-Sep-14																	
0240-1116	Int. Noise Enclosure - Fabricate Main Beam (32 nos.) Bridge F1A/F2A	0	14-Apr-14 A	10-Jul-14 A	03-Sep-14	03-Sep-14																	
0240-1117	Int. Noise Enclosure - Fabricate Temp. Column Bridge (32 nos.) F1A/F2A	0	14-Apr-14 A	11-Jul-14 A	03-Sep-14	03-Sep-14																	
0240-1118	Int. Noise Enclosure - Fabricate Sec. Beam (240 nos.) Bridge F1A/F2A	0	14-Apr-14 A	09-Jul-14 A	03-Sep-14	03-Sep-14																	
0240-1132	Noise Barrier Structural - Shop Drawings	12	21-Mar-14 A	31-Jul-14	23-Aug-14	03-Sep-14	34																
0240-1136	Noise Barrier Panel - Design ER Review/Resubmission	24	01-Mar-14 A	12-Aug-14	30-Jul-14	22-Aug-14	10																
0240-1137	Noise Barrier Panel - Design No Adverse Comment	28	13-Aug-14	09-Sep-14	23-Aug-14	19-Sep-14	10																
0240-1141	Noise Barrier Panel - Fabricate Type C Column (77 nos.)	36	25-Aug-14	29-Sep-14	04-Sep-14	09-Oct-14	10																
0240-1142	Noise Barrier Panel - Fabricate Type B Column (25 nos.)	24	06-Sep-14	29-Sep-14	10-Oct-14	02-Nov-14	34																
0240-1429	Noise Barrier Panel - Fabricate Beams (203 nos.)	48	06-Sep-14	23-Oct-14	22-Sep-14	08-Nov-14	16																
0240-1143	Noise Barrier Panel - Fabricate Type A Column (38 nos.)	30	18-Sep-14	17-Oct-14	22-Oct-14	20-Nov-14	34																
0240-1050	Temp Bridge "TB" Design - Prep & Submit	22	21-Feb-14 A	10-Aug-14	27-Jul-14	17-Aug-14	7																
0240-1060	Temp Bridge "TB" Design - ER review and comment	24	13-Aug-14 A	03-Sep-14	18-Aug-14	10-Sep-14	7																

- Remaining Level of Effort
- Actual Level of Effort
- Actual Work
- Remaining Work
- Critical Remaining Work
- ◆ Milestone

**Contract HY/2009/19**

**Three Month Rolling Programme (20 Jul to 19 Oct 2014)**

3MRP

3MRP - Jul 2014 to Oct 2014

Page 1 of 10

Activity ID	Activity Name	Rem Dur	Start	Finish	Late Start	Late Finish	Total Float	2014																				
								July					August				September			October								
								23	30	07	14	21	28	04	11	18	25	01	08	15	22	29	06	13				
0240-1070	Temp Bridge "TB" Design - Resubmission	24	04-Sep-14	27-Sep-14	11-Sep-14	04-Oct-14	7																					
0240-1080	Temp Bridge "TB" Design - ER Approval	18	28-Sep-14	15-Oct-14	05-Oct-14	22-Oct-14	7																					
0240-1082	Temp Bridge "TB" Tower Fabrication	24	28-Sep-14	21-Oct-14	05-Oct-14	28-Oct-14	7																					
0240-1085	Temp Bridge "TB" Tower Fabrication	36	16-Oct-14	20-Nov-14	23-Oct-14	27-Nov-14	7																					
<b>02.5 - Bridge Segment/Beam Off-site Precasting</b>																												
0250-1720.10	Precast Beam Bridge E 1718-B	0	21-Jun-14 A	20-Jul-14*	31-Oct-14	31-Oct-14	104																					
0250-1950	Bridg C5 Pier 33 T-span Segment Off-site Casting (11 nos.)	0	10-Jun-14 A	13-Jul-14 A	10-Jan-15	10-Jan-15																						
0250-1960	Bridg C5 Pier 34 T-span Segment Off-site Casting (9 nos.)	0	22-Jun-14 A	13-Jul-14 A	10-Jan-15	10-Jan-15																						
0250-1970	Bridg C5 Pier 32 End-span Segment Off-site Casting (6 nos.)	18	20-Jun-14 A	06-Aug-14	12-Dec-14	29-Dec-14	145																					
0250-1980	Bridg C5 Abut D12 E-span Segment Off-site Casting (6 nos.)	19	07-Aug-14	25-Aug-14	30-Dec-14	17-Jan-15	145																					
0250-1990	Bridg C3 Pier 27 T-span Segment Off-site Casting (11 nos.)	27	18-Aug-14	13-Sep-14	10-Jan-15	05-Feb-15	145																					
0250-2010	Bridg C3 Pier 28 End-span Segment Off-site Casting (6 nos.)	19	26-Aug-14	13-Sep-14	18-Jan-15	05-Feb-15	145																					
0250-2000	Bridg C3 Pier 26 T-span Segment Off-site Casting (13 nos.)	31	14-Sep-14	14-Oct-14	06-Feb-15	08-Mar-15	145																					
0250-2020	Bridg C3 Pier 25 End-span Segment Off-site Casting (5 nos.)	16	14-Sep-14	29-Sep-14	21-Feb-15	08-Mar-15	160																					
0250-2050	Bridg C2 Pier 25 End-span Segment Off-site Casting (6 nos.)	19	30-Sep-14	18-Oct-14	17-Mar-15	04-Apr-15	168																					
0250-2030	Bridg C2 Pier 24 T-span Segment Off-site Casting (11 nos.)	27	15-Oct-14	10-Nov-14	09-Mar-15	04-Apr-15	145																					
<b>03 - PRELIMINARY WORKS</b>																												
<b>03.3 - Interface Works</b>																												
0330-1350	Erect Special Hoarding at Portion IV and V	36	03-Oct-14*	13-Nov-14	15-Jul-15	25-Aug-15	233																					
<b>05 - SECTION 2 &amp; 2A OF THE WORKS</b>																												
<b>05.1 - Cut &amp; Cover Tunnel Ch 4855-4932 (APS Footprint)</b>																												
<b>05.1.2 - ELS</b>																												
0512-1175	Lev 6B (-16.5mPD) S8 ELS (9 nos)	0	11-Jun-14 A	15-Jul-14 A	21-Jul-14	21-Jul-14																						
0512-1178	Lev 6A (-16.5mPD) S1-S3 ELS (6 nos)	0	13-Jun-14 A	18-Jul-14 A	21-Jul-14	21-Jul-14																						
0512-1179	Lower Water Level to -21.0mPD (Pump Test)	0	10-Jul-14 A	20-Jul-14 A	06-Aug-14	06-Aug-14																						
0512-1180	Lev 7B (-20.0mPD) S8 Excav (5198m3)	0	26-Jun-14 A	06-Jul-14 A	11-Aug-19	11-Aug-19																						
0512-1185	Lev 7B (-20.0mPD) S8 ELS (9 nos)	0	03-Jul-14 A	19-Jul-14 A	29-Jul-14	29-Jul-14																						
0512-1182	Lev 7A (-20.0mPD) S1-S3 Excav (5544m3)	7	14-Jul-14 A	26-Jul-14	21-Jul-14	27-Jul-14	1																					
0512-1189.1	Lower Water Level to -29.5mPD (Pump Test)	12	15-Jul-14 A	02-Aug-14	02-Aug-14	15-Aug-14	11																					
0512-1187.1	Lev 7A (-20.0mPD) S1-S3 ELS (8 nos)	9	28-Jul-14	06-Aug-14	28-Jul-14	06-Aug-14	0																					
0512-1200.1	Lev 8 (-28.5mPD) Excav + Blinding (13811m3)	16	15-Jul-14 A	15-Aug-14	29-Jul-14	15-Aug-14	0																					
0512-1215	Middle Lev 1 (+2.0mPD) ELS (6 nos)	0	19-Jun-14 A	05-Jul-14 A	08-Aug-14	08-Aug-14																						
0512-1230	Middle Lev 2 (-2.0mPD) Excav (4620m3)	0	07-Jul-14 A	14-Jul-14 A	08-Aug-14	08-Aug-14																						
0512-1235	Middle Lev 2 (-2.0mPD) ELS (6 nos)	6	15-Jul-14 A	25-Jul-14	08-Aug-14	14-Aug-14	20																					
0512-1238	Submit/Approve Method Statement - Permanent Bulkhead Wall Removal	14	20-Jul-14	02-Aug-14	09-Aug-14	23-Aug-14	21																					
0512-1240	Middle Lev 3 (-7.0mPD) Excav (5280m3)	11	26-Jul-14	05-Aug-14	14-Aug-14	25-Aug-14	20																					
0512-1255	Middle Lev 3 Break Permanent Bulkhead Wall to -7.0mPD	9	03-Aug-14	11-Aug-14	23-Aug-14	01-Sep-14	21																					
0512-1250	Middle Lev 3 (-7.0mPD) ELS (6 nos)	7	06-Aug-14	12-Aug-14	25-Aug-14	01-Sep-14	20																					
0512-1260	Middle Lev 4 (-11.0mPD) Excav (5280m3)	12	13-Aug-14	24-Aug-14*	01-Sep-14	13-Sep-14	20																					
0512-1275	Middle Lev 4 Break Permanent Bulkhead Wall to -11.0mPD	9	22-Aug-14	30-Aug-14	22-Sep-14	30-Sep-14	31																					
0512-1270	Middle Lev 4 (-11.0mPD) ELS (6 nos)	7	25-Aug-14	31-Aug-14	24-Sep-14	30-Sep-14	30																					
0512-1290	Middle Lev 5 Break Permanent Bulkhead Wall to -15.0mPD	9	31-Aug-14	08-Sep-14	01-Oct-14	09-Oct-14	31																					
0512-1280	Middle Lev 5 (-15.0mPD) Excav + Blinding (3960m3)	9	01-Sep-14	09-Sep-14	01-Oct-14	09-Oct-14	30																					
<b>05.1.3 - APS Structure</b>																												

- Remaining Level of Effort
- Actual Level of Effort
- █ Actual Work
- █ Remaining Work
- █ Critical Remaining Work
- ◆ Milestone

**Contract HY/2009/19**  
**Three Month Rolling Programme (20 Jul to 19 Oct 2014)**

3MRP  
 3MRP - Jul 2014 to Oct 2014  
 Page 2 of 10

Activity ID	Activity Name	Rem Dur	Start	Finish	Late Start	Late Finish	Total Float	2014																		
								July					August				September				October					
								23	30	07	14	21	28	04	11	18	25	01	08	15	22	29	06	13		
0513-1310	APS Base Slab - Prepare CJ and form keys into D-wall	12	09-Aug-14	22-Aug-14	08-Aug-14	22-Aug-14	0														APS Base Slab - Prepare CJ and form keys into D-wall					
0513-1312	APS Base Slab - Waterproofing Membrane	12	09-Aug-14	22-Aug-14	08-Aug-14	22-Aug-14	0														APS Base Slab - Waterproofing Membrane					
0513-1314	APS Bay 17 Base Slab - Rebar Fixing	12	08-Sep-14	22-Sep-14	19-Sep-14	04-Oct-14	9														APS Bay 17 Base Slab - Rebar Fixing					
0513-1316	APS Bay 17 Base Slab - Formworks/Prepare CJ	12	19-Sep-14	04-Oct-14	30-Sep-14	15-Oct-14	9														APS Bay 17 Base Slab - Formworks/Prepare CJ					
0513-1318	APS Bay 17 Base Slab - Concreting	2	06-Oct-14	07-Oct-14	16-Oct-14	17-Oct-14	9														APS Bay 17 Base Slab - Concreting					
0513-1320	APS Bay 17 Wall/Col - Rebar Fixing	10	08-Oct-14	18-Oct-14	18-Oct-14	29-Oct-14	9														APS Bay 17 Wall/Col - Rebar Fixing					
0513-1322	APS Bay 17 Wall/Col - Formworks	10	08-Oct-14	18-Oct-14	18-Oct-14	29-Oct-14	9														APS Bay 17 Wall/Col - Formworks					
0513-1326	APS Bay 18 Base Slab - Rebar Fixing	12	08-Aug-14	21-Aug-14	08-Aug-14	21-Aug-14	0														APS Bay 18 Base Slab - Rebar Fixing					
0513-1328	APS Bay 18 Base Slab - Formworks/Prepare CJ	12	19-Aug-14	01-Sep-14	29-Aug-14	12-Sep-14	9														APS Bay 18 Base Slab - Formworks/Prepare CJ					
0513-1330	APS Bay 18 Base Slab - Concreting	2	02-Sep-14	03-Sep-14	13-Sep-14	15-Sep-14	9														APS Bay 18 Base Slab - Concreting					
0513-1332	APS Bay 18 Wall/Col - Rebar Fixing	10	04-Sep-14	16-Sep-14	18-Oct-14	29-Oct-14	35														APS Bay 18 Wall/Col - Rebar Fixing					
0513-1334	APS Bay 18 Wall/Col - Formworks	10	04-Sep-14	16-Sep-14	18-Oct-14	29-Oct-14	35														APS Bay 18 Wall/Col - Formworks					
0513-1336	APS Bay 18 Wall/Col - Concreting	2	17-Sep-14	18-Sep-14	30-Oct-14	31-Oct-14	35														APS Bay 18 Wall/Col - Concreting					
0513-1338	APS Bay 19 Base Slab - Rebar Fixing	12	04-Sep-14	18-Sep-14	16-Sep-14	29-Sep-14	9														APS Bay 19 Base Slab - Rebar Fixing					
0513-1340	APS Bay 19 Base Slab - Formworks/Prepare CJ	12	16-Sep-14	29-Sep-14	30-Sep-14	15-Oct-14	12														APS Bay 19 Base Slab - Formworks/Prepare CJ					
0513-1342	APS Bay 19 Base Slab - Concreting	2	30-Sep-14	03-Oct-14	16-Oct-14	17-Oct-14	12														APS Bay 19 Base Slab - Concreting					
0513-1344	APS Bay 19 Wall/Col - Rebar Fixing	10	04-Oct-14	15-Oct-14	18-Oct-14	29-Oct-14	12														APS Bay 19 Wall/Col - Rebar Fixing					
0513-1346	APS Bay 19 Wall/Col - Formworks	10	04-Oct-14	15-Oct-14	18-Oct-14	29-Oct-14	12														APS Bay 19 Wall/Col - Formworks					
0513-1348	APS Bay 19 Wall/Col - Concreting	2	16-Oct-14	17-Oct-14	30-Oct-14	31-Oct-14	12														APS Bay 19 Wall/Col - Concreting					
0513-1350	APS Bay 20 Base Slab - Rebar Fixing	12	01-Aug-14	14-Aug-14	01-Aug-14	14-Aug-14	0														APS Bay 20 Base Slab - Rebar Fixing					
0513-1352	APS Bay 20 Base Slab - Formworks/Prepare CJ	12	12-Aug-14	25-Aug-14	26-Aug-14	08-Sep-14	12														APS Bay 20 Base Slab - Formworks/Prepare CJ					
0513-1354	APS Bay 20 Base Slab - Concreting	2	26-Aug-14	27-Aug-14	10-Sep-14	11-Sep-14	12														APS Bay 20 Base Slab - Concreting					
0513-1356	APS Bay 20 Wall/Col - Rebar Fixing	10	28-Aug-14	08-Sep-14	18-Oct-14	29-Oct-14	41														APS Bay 20 Wall/Col - Rebar Fixing					
0513-1358	APS Bay 20 Wall/Col - Formworks	10	28-Aug-14	08-Sep-14	18-Oct-14	29-Oct-14	41														APS Bay 20 Wall/Col - Formworks					
0513-1360	APS Bay 20 Wall/Col - Concreting	2	10-Sep-14	11-Sep-14	30-Oct-14	31-Oct-14	41														APS Bay 20 Wall/Col - Concreting					
0513-1362	APS Bay 21 Base Slab - Rebar Fixing	12	28-Aug-14	11-Sep-14	12-Sep-14	25-Sep-14	12														APS Bay 21 Base Slab - Rebar Fixing					
0513-1364	APS Bay 21 Base Slab - Formworks/Prepare CJ	12	08-Sep-14	22-Sep-14	30-Sep-14	15-Oct-14	18														APS Bay 21 Base Slab - Formworks/Prepare CJ					
0513-1366	APS Bay 21 Base Slab - Concreting	2	23-Sep-14	24-Sep-14	16-Oct-14	17-Oct-14	18														APS Bay 21 Base Slab - Concreting					
0513-1368	APS Bay 21 Wall/Col - Rebar Fixing	10	25-Sep-14	08-Oct-14	18-Oct-14	29-Oct-14	18														APS Bay 21 Wall/Col - Rebar Fixing					
0513-1370	APS Bay 21 Wall/Col - Formworks	10	25-Sep-14	08-Oct-14	18-Oct-14	29-Oct-14	18														APS Bay 21 Wall/Col - Formworks					
0513-1372	APS Bay 21 Wall/Col - Concreting	2	09-Oct-14	10-Oct-14	30-Oct-14	31-Oct-14	18														APS Bay 21 Wall/Col - Concreting					
0513-1374	APS Bay 22 Base Slab - Rebar Fixing	12	05-Aug-14	18-Aug-14	05-Aug-14	18-Aug-14	0														APS Bay 22 Base Slab - Rebar Fixing					
0513-1376	APS Bay 22 Base Slab - Formworks/Prepare CJ	12	15-Aug-14	28-Aug-14	30-Sep-14	15-Oct-14	38														APS Bay 22 Base Slab - Formworks/Prepare CJ					
0513-1378	APS Bay 22 Base Slab - Concreting	2	29-Aug-14	30-Aug-14	16-Oct-14	17-Oct-14	38														APS Bay 22 Base Slab - Concreting					
0513-1380	APS Bay 22 Wall/Col - Rebar Fixing	10	01-Sep-14	12-Sep-14	18-Oct-14	29-Oct-14	38														APS Bay 22 Wall/Col - Rebar Fixing					
0513-1382	APS Bay 22 Wall/Col - Formworks	10	01-Sep-14	12-Sep-14	18-Oct-14	29-Oct-14	38														APS Bay 22 Wall/Col - Formworks					
0513-1384	APS Bay 22 Wall/Col - Concreting	2	13-Sep-14	15-Sep-14	30-Oct-14	31-Oct-14	38														APS Bay 22 Wall/Col - Concreting					
0513-1386	APS Bay 23 Base Slab - Rebar Fixing	12	19-Sep-14	04-Oct-14	19-Sep-14	04-Oct-14	0														APS Bay 23 Base Slab - Rebar Fixing					
0513-1388	APS Bay 23 Base Slab - Formworks/Prepare CJ	12	30-Sep-14	15-Oct-14	30-Sep-14	15-Oct-14	0														APS Bay 23 Base Slab - Formworks/Prepare CJ					
0513-1390	APS Bay 23 Base Slab - Concreting	2	16-Oct-14	17-Oct-14	16-Oct-14	17-Oct-14	0														APS Bay 23 Base Slab - Concreting					
0513-1392	APS Bay 23 Wall/Col - Rebar Fixing	10	18-Oct-14	29-Oct-14	18-Oct-14	29-Oct-14	0														APS Bay 23 Wall/Col - Rebar Fixing					
0513-1394	APS Bay 23 Wall/Col - Formworks	10	18-Oct-14	29-Oct-14	18-Oct-14	29-Oct-14	0														APS Bay 23 Wall/Col - Formworks					
0513-1398	APS Bay 24 Base Slab - Rebar Fixing	12	12-Aug-14	25-Aug-14	12-Aug-14	25-Aug-14	0														APS Bay 24 Base Slab - Rebar Fixing					
0513-1400	APS Bay 24 Base Slab - Formworks/Prepare CJ	12	22-Aug-14	04-Sep-14	30-Sep-14	15-Oct-14	32														APS Bay 24 Base Slab - Formworks/Prepare CJ					

- Remaining Level of Effort
- Actual Level of Effort
- Actual Work
- Remaining Work
- Critical Remaining Work
- Milestone

### Contract HY/2009/19

### Three Month Rolling Programme (20 Jul to 19 Oct 2014)

3MRP

3MRP - Jul 2014 to Oct 2014

Page 3 of 10



Activity ID	Activity Name	Rem Dur	Start	Finish	Late Start	Late Finish	Total Float	2014													
								July				August				September				October	
								23	30	07	14	21	28	04	11	18	25	01	08	15	22
0514-1664	Tunnel Bay 22 Base Slab - Formwork/Prepare CJ	9	06-Oct-14	15-Oct-14	19-Nov-14	28-Nov-14	38														
0514-1666	Tunnel Bay 22 Base Slab - Concreting	2	16-Oct-14	17-Oct-14	29-Nov-14	01-Dec-14	38														
0514-1668	Tunnel Bay 22 Centre Wall - Remove Strut	6	18-Oct-14	24-Oct-14	02-Dec-14	08-Dec-14	38														
0514-1716	Tunnel Bay 24 Base Slab - Falsework/Formwork	9	23-Sep-14	04-Oct-14	01-Nov-14	11-Nov-14	32														
0514-1718	Tunnel Bay 24 Base Slab - Rebar Fixing	9	06-Oct-14	15-Oct-14	12-Nov-14	21-Nov-14	32														
0514-1720	Tunnel Bay 24 Base Slab - Formwork/Prepare CJ	9	13-Oct-14	22-Oct-14	19-Nov-14	28-Nov-14	32														
0514-1772	Tunnel Bay 26 Base Slab - Falsework/Formwork	9	26-Sep-14	08-Oct-14	01-Nov-14	11-Nov-14	29														
0514-1774	Tunnel Bay 26 Base Slab - Rebar Fixing	9	09-Oct-14	18-Oct-14	12-Nov-14	21-Nov-14	29														
0514-1776	Tunnel Bay 26 Base Slab - Formwork/Prepare CJ	9	16-Oct-14	25-Oct-14	19-Nov-14	28-Nov-14	29														
<b>05.2 - Cut &amp; Cover Tunnel Ch 4932-5149</b>																					
<b>05.2.3 - ELS</b>																					
0524-2889	Pump Sump - Excavation & Lateral Support	0	22-Apr-14 A	19-Jul-14 A	04-Sep-14	04-Sep-14															
0524-2885	Pump Sump - Structure - Base Slab	9	21-Jul-14	30-Jul-14	04-Sep-14	15-Sep-14	39														
0524-2890	Pump Sump - Structure - Wall	9	31-Jul-14	09-Aug-14	16-Sep-14	25-Sep-14	39														
<b>05.2.4 - Tunnel Structure</b>																					
0524-3015	Bay 1 Tunnel Vertical Wall	7	25-Aug-14 A	26-Aug-14	07-Oct-14	14-Oct-14	39														
0524-3025	Bay 1 Tunnel False Works	6	27-Aug-14	02-Sep-14	15-Oct-14	21-Oct-14	39														
0524-3035	Bay 1 Tunnel OHVD Slab	8	03-Sep-14	12-Sep-14	22-Oct-14	30-Oct-14	39														
0524-3045	Bay 1 Tunnel Roof Slab	12	13-Sep-14	26-Sep-14	31-Oct-14	13-Nov-14	39														
0524-3115	Bay 2 Tunnel Vertical Wall	7	11-Aug-14	18-Aug-14	26-Sep-14	06-Oct-14	39														
0524-3125	Bay 2 Tunnel False Works	6	19-Aug-14	25-Aug-14	01-Nov-14	07-Nov-14	61														
0524-3135	Bay 2 Tunnel OHVD Slab	8	26-Aug-14	03-Sep-14	08-Nov-14	17-Nov-14	61														
0524-3145	Bay 2 Tunnel Roof Slab	12	04-Sep-14	18-Sep-14	18-Nov-14	01-Dec-14	61														
0524-3472	Remove Temp. Stock Pile on top of Tunnel	18	05-Sep-14	26-Sep-14	24-Oct-14	13-Nov-14	39														
0524-3474	Waterproofing Preparation + Tunnel Roof Remedial Works	15	27-Sep-14	16-Oct-14	14-Nov-14	01-Dec-14	39														
0524-3365	Waterproof Top Slab Bay 1 to Bay 4	12	17-Oct-14	30-Oct-14	02-Dec-14	15-Dec-14	39														
0524-3475	Waterproof Top Slab Bay 5 to Bay 9	12	17-Oct-14	30-Oct-14	02-Dec-14	15-Dec-14	39														
0524-3685	Waterproof Top Slab Bays 12 and 13	12	17-Oct-14	30-Oct-14	02-Dec-14	15-Dec-14	39														
<b>05.2.5 - Road &amp; Miscellaneous Works</b>																					
0525-2890	Tunnel Road Drainage (excl vent bldg)	45	27-Sep-14	20-Nov-14	05-Dec-14	28-Jan-15	57														
<b>06 - SECTION 3 OF THE WORKS</b>																					
<b>06.1 - Westbound - Pier 29-34</b>																					
0610-2126	Pier 29-3 Bored Pile (Normal)	18	21-Jul-14	09-Aug-14	23-Oct-14	12-Nov-14	78														
<b>06.2 - Box Culvert U1</b>																					
0620-2632	1350mm Drainage MH 9-P to MH 3-1 Stage 1 - Sheet Pile	4	20-Mar-14 A	24-Jul-14	28-Oct-14	31-Oct-14	82														
0620-2633	1350mm Drainage MH 9-P to MH 3-1 Stage 1 - Trench Excav	4	02-Apr-14 A	29-Jul-14	01-Nov-14	05-Nov-14	82														
0620-2634	1350mm Drainage MH 9-P to MH 3-1 Stage 1 - Pipe Laying	6	30-Jul-14	05-Aug-14	06-Nov-14	12-Nov-14	82														
0620-2635	1350mm Drainage MH 9-P to MH 3-1 Stage 1 - Backfill/Extract Sheet Pile	9	11-Aug-14	20-Aug-14	13-Nov-14	22-Nov-14	78														
0620-2636	1350mm Drainage MH 9-P to MH 3-1 Stage 2 - Remove Pavement	7	21-Aug-14	28-Aug-14	24-Nov-14	01-Dec-14	78														
0620-2637	1350mm Drainage MH 9-P to MH 3-1 Stage 2 - Sheet Pile	12	29-Aug-14	12-Sep-14	02-Dec-14	15-Dec-14	78														
0620-2638	1350mm Drainage MH 9-P to MH 3-1 Stage 2 - Trench Excav	9	13-Sep-14	23-Sep-14	16-Dec-14	26-Dec-14	78														
0620-2639	1350mm Drainage MH 9-P to MH 3-1 Stage 2 - Pipe Laying	6	24-Sep-14	30-Sep-14	27-Dec-14	03-Jan-15	78														
0620-2641	1350mm Drainage MH 9-P to MH 3-1 Stage 2 - Backfill/Extract Sheet Pile	7	03-Oct-14	10-Oct-14	05-Jan-15	12-Jan-15	78														
0620-2642	1500mm Drainage MH 3-1 to MH 3-2 - Sheet Pile	12	29-Aug-14	12-Sep-14	17-Dec-14	31-Dec-14	91														

- █ Remaining Level of Effort
- █ Actual Level of Effort
- █ Actual Work
- █ Remaining Work
- █ Critical Remaining Work
- ◆ Milestone

**Contract HY/2009/19**

**Three Month Rolling Programme (20 Jul to 19 Oct 2014)**

3MRP  
3MRP - Jul 2014 to Oct 2014  
Page 5 of 10





Activity ID	Activity Name	Rem Dur	Start	Finish	Late Start	Late Finish	Total Float	2014																							
								July						August						September						October					
								23	30	07	14	21	28	04	11	18	25	01	08	15	22	29	06	13							
1013-1865	Bridge D3 Parapet North D3-N10 to D3-N05 - Concreting (F1)	21	20-Jul-14	09-Aug-14	22-Jul-14	11-Aug-14	2	Bridge D3 Parapet North D3-N10 to D3-N05 - Concreting (F1)																							
1013-1138.1	Bridge D3 Par. North D3-N11 to D3-N12 - Scaffolding	12	01-Aug-14	14-Aug-14	08-Aug-14	21-Aug-14	6	Bridge D3 Par. North D3-N11 to D3-N12 - Scaffolding																							
1013-1138.2	Bridge D3 Par. North D3-N11 to D3-N12 - Rebar Fixing	9	08-Aug-14	18-Aug-14	15-Aug-14	25-Aug-14	6	Bridge D3 Par. North D3-N11 to D3-N12 - Rebar Fixing																							
1013-1138.3	Bridge D3 Par. North D3-N11 to D3-N12 - Formworks + Concreting	6	15-Aug-14	21-Aug-14	22-Aug-14	28-Aug-14	6	Bridge D3 Par. North D3-N11 to D3-N12 - Formworks + Concreting																							
1013-1132	Bridge D3 Parapet South D3-S13 to D3-S08 - Concreting (F2)	0	08-Jun-14 A	04-Jul-14 A	11-Aug-19	11-Aug-19		Bridge D3 Parapet South D3-S13 to D3-S08 - Concreting (F2)																							
1013-1993	Bridge D3 Parapet South D3-S04 to D3-S01 - Rebar Fixing (F5)	0	13-Jun-14 A	26-Jun-14 A	11-Aug-19	11-Aug-19		Bridge D3 Parapet South D3-S04 to D3-S01 - Rebar Fixing (F5)																							
1013-1963	Bridge D3 Parapet South D3-S04 to D3-S01 - Concreting (F4)	0	19-Jun-14 A	12-Jul-14 A	27-Jul-14	27-Jul-14		Bridge D3 Parapet South D3-S04 to D3-S01 - Concreting (F4)																							
1013-1973	Bridge D3 Parapet South D3-S05 to D3-S07 - Concreting (F4)	0	08-Jul-14 A	16-Jul-14 A	11-Aug-19	11-Aug-19		Bridge D3 Parapet South D3-S05 to D3-S07 - Concreting (F4)																							
1013-2153	Bridge D3 Parapet South D3-S05 to D3-S07 - Prefab Rebar Install	0	05-Jul-14 A	10-Jul-14 A	11-Aug-19	11-Aug-19		Bridge D3 Parapet South D3-S05 to D3-S07 - Prefab Rebar Install																							
1013-1869	Bridge D3 Road Lighting	9	19-Aug-14	28-Aug-14	29-Aug-14	08-Sep-14	9	Bridge D3 Road Lighting																							
1013-1870	Bridge D3 Parapet Railing	9	19-Aug-14	28-Aug-14	29-Aug-14	08-Sep-14	9	Bridge D3 Parapet Railing																							
1013-1144.1	Bridge D3 - Seal Deck Opening + Waterproofing Preparation	9	13-Aug-14	21-Aug-14	20-Aug-14	28-Aug-14	7	Bridge D3 - Seal Deck Opening + Waterproofing Preparation																							
1013-1886	Bridge D3 MJ at Abutment D12	6	19-Aug-14	24-Aug-14	26-Aug-14	31-Aug-14	7	Bridge D3 MJ at Abutment D12																							
1013-1144	Bridge D3 Deck Waterproofing	3	22-Aug-14	24-Aug-14	29-Aug-14	31-Aug-14	7	Bridge D3 Deck Waterproofing																							
1013-1145	Bridge D3 Deck Paving & Marking	9	25-Aug-14	02-Sep-14	01-Sep-14	09-Sep-14	7	Bridge D3 Deck Paving & Marking																							
<b>Bridge D2</b>																															
1013-1565	Bridge D2 Parapet North Prefab Rebar Install D2-N01 to D2-N14	2	19-Jun-14 A	21-Jul-14	15-Aug-14	16-Aug-14	26	Bridge D2 Parapet North Prefab Rebar Install D2-N01 to D2-N14																							
1013-1913	Bridge D2 Parapet North D2-N08 to D2-N11 - Concreting (F3)	0	08-Jul-14 A	19-Jul-14 A	11-Aug-19	11-Aug-19		Bridge D2 Parapet North D2-N08 to D2-N11 - Concreting (F3)																							
1013-1706	Bridge D2 Parapet North D2-N12 to D2-N14 - Concreting (F5)	9	31-Jul-14	08-Aug-14	31-Jul-14	08-Aug-14	0	Bridge D2 Parapet North D2-N12 to D2-N14 - Concreting (F5)																							
1013-1566	Bridge D2 Parapet North D2-N01 to D2-N04 - Concreting (F5)	12	17-Aug-14	28-Aug-14	17-Aug-14	28-Aug-14	0	Bridge D2 Parapet North D2-N01 to D2-N04 - Concreting (F5)																							
1013-1705	Bridge D2 Parapet North D2-N05 to D2-N07 - Concreting (F5)	10	17-Aug-14	26-Aug-14	19-Aug-14	28-Aug-14	2	Bridge D2 Parapet North D2-N05 to D2-N07 - Concreting (F5)																							
1013-1133	Bridge D2 Parapet South D2-S12 to D2-S13- Rebar Fixing (F5)	0	03-Jul-14 A	18-Jul-14 A	03-Aug-14	03-Aug-14		Bridge D2 Parapet South D2-S12 to D2-S13- Rebar Fixing (F5)																							
1013-1134	Bridge D2 Parapet South Prefab Rebar Install D2-S11 to D2-S03	6	02-Jul-14 A	25-Jul-14	11-Aug-14	16-Aug-14	22	Bridge D2 Parapet South Prefab Rebar Install D2-S11 to D2-S03																							
1013-1863	Bridge D2 Parapet South D2-S13 to D2-S10 - Concreting (F4)	8	13-Jul-14 A	27-Jul-14	27-Jul-14	03-Aug-14	7	Bridge D2 Parapet South D2-S13 to D2-S10 - Concreting (F4)																							
1013-1943	Bridge D2 Parapet South D2-S03 to D2-S09 - Concreting (F2)	24	17-Jul-14 A	12-Aug-14	05-Aug-14	28-Aug-14	16	Bridge D2 Parapet South D2-S03 to D2-S09 - Concreting (F2)																							
1013-2143	Bridge D2 Parapet South Prefab Rebar Install D2-S01 to D2-S02	6	13-Aug-14	18-Aug-14	16-Aug-14	21-Aug-14	3	Bridge D2 Parapet South Prefab Rebar Install D2-S01 to D2-S02																							
1013-1953	Bridge D2 Parapet South D2-S01 - D2-S02 - Concreting (F2)	7	21-Aug-14	27-Aug-14	22-Aug-14	28-Aug-14	1	Bridge D2 Parapet South D2-S01 - D2-S02 - Concreting (F2)																							
1013-1880	Bridge D2 Road Lighting	10	21-Aug-14	01-Sep-14	28-Aug-14	08-Sep-14	6	Bridge D2 Road Lighting																							
1013-1881	Bridge D2 Parapet Railing	10	21-Aug-14	01-Sep-14	28-Aug-14	08-Sep-14	6	Bridge D2 Parapet Railing																							
1013-1860.1	Bridge D2 - Seal Deck Opening / Waterproofing Preparation	9	20-Aug-14	28-Aug-14	20-Aug-14	28-Aug-14	0	Bridge D2 - Seal Deck Opening / Waterproofing Preparation																							
1013-1891	Bridge D2 MJ at Pier D8	6	26-Aug-14	31-Aug-14	26-Aug-14	31-Aug-14	0	Bridge D2 MJ at Pier D8																							
1013-1860	Bridge D2 Deck Waterproofing	3	29-Aug-14	31-Aug-14	29-Aug-14	31-Aug-14	0	Bridge D2 Deck Waterproofing																							
1013-1561	Bridge D2 Deck Paving & Marking	9	01-Sep-14	09-Sep-14	01-Sep-14	09-Sep-14	0	Bridge D2 Deck Paving & Marking																							
<b>Bridge D1</b>																															
1013-1650	Bridge D1 Stitching at midspan between D01-D02 + Tendon Stressing	0	16-Jun-14 A	23-Jun-14 A	25-Jul-14	25-Jul-14		Bridge D1 Stitching at midspan between D01-D02 + Tendon Stressing																							
1013-1660	Bridge D1 Permanent Stressing	10	13-Jul-14 A	29-Jul-14	25-Jul-14	03-Aug-14	5	Bridge D1 Permanent Stressing																							
1013-1651	BackLaunch LG to Pier D03 to D05	0	13-Jul-14 A	15-Jul-14 A	11-Aug-19	11-Aug-19		BackLaunch LG to Pier D03 to D05																							
1013-1652	Dismantle LG - E&M and Trusses	12	16-Jul-14 A	31-Jul-14	20-Jul-14	31-Jul-14	0	Dismantle LG - E&M and Trusses																							
1013-1653	Dismantle LG - Complete	6	01-Aug-14	06-Aug-14	04-Aug-14	09-Aug-14	3	Dismantle LG - Complete																							
1013-1704	Bridge D1 Parapet North D1-N01 to D1-N10 Prefab Rebar Install	12	01-Aug-14	12-Aug-14	01-Aug-14	12-Aug-14	0	Bridge D1 Parapet North D1-N01 to D1-N10 Prefab Rebar Install																							
1013-1933	Bridge D1 Parapet North D1-N01 to D1-N08 - Concreting (F3)	25	04-Aug-14	28-Aug-14	04-Aug-14	28-Aug-14	0	Bridge D1 Parapet North D1-N01 to D1-N08 - Concreting (F3)																							
1013-1708	Bridge D1 Parapet North D1-N09 to D1-N10 - Concreting (F5)	8	09-Aug-14	16-Aug-14	09-Aug-14	16-Aug-14	0	Bridge D1 Parapet North D1-N09 to D1-N10 - Concreting (F5)																							
1013-1701	Bridge D1 Parapet South D1-S01 to D1-S10 - Prefab Rebar Install	12	01-Aug-14	12-Aug-14	04-Aug-14	15-Aug-14	3	Bridge D1 Parapet South D1-S01 to D1-S10 - Prefab Rebar Install																							
1013-1983	Bridge D1 Parapet South D1-S01 to D1-S06 - Concreting (F4)	18	04-Aug-14	21-Aug-14	11-Aug-14	28-Aug-14	7	Bridge D1 Parapet South D1-S01 to D1-S06 - Concreting (F4)																							

- Remaining Level of Effort
- Actual Level of Effort
- Actual Work
- Remaining Work
- Critical Remaining Work
- ◆ Milestone

### Contract HY/2009/19

### Three Month Rolling Programme (20 Jul to 19 Oct 2014)

3MRP

3MRP - Jul 2014 to Oct 2014

Activity ID	Activity Name	Rem Dur	Start	Finish	Late Start	Late Finish	Total Float	2014																	
								July						August				September				October			
								23	30	07	14	21	28	04	11	18	25	01	08	15	22	29	06	13	
1013-1703	Bridge D1 Parapet South D1-S07 to D1-S10 - Concreting (F2)	14	07-Aug-14	20-Aug-14	08-Aug-14	21-Aug-14	1	Bridge D1 Parapet South D1-S07 to D1-S10 - Concreting (F2)																	
1013-1882	Bridge D1 Road Lighting	10	22-Aug-14	02-Sep-14	01-Sep-14	12-Sep-14	8	Bridge D1 Road Lighting																	
1013-1883	Bridge D1 Parapet Railing	10	22-Aug-14	02-Sep-14	01-Sep-14	12-Sep-14	8	Bridge D1 Parapet Railing																	
1013-1715.1	Bridge D1 - Seal Deck Opening / Waterproofing Preparation	9	20-Aug-14	28-Aug-14	20-Aug-14	28-Aug-14	0	Bridge D1 - Seal Deck Opening / Waterproofing Preparation																	
1013-1892	Bridge D1 MJ at Pier D1 and D4	7	23-Aug-14	30-Aug-14	23-Aug-14	30-Aug-14	0	Bridge D1 MJ at Pier D1 and D4																	
1013-1715	Bridge D1 Deck Waterproofing	3	29-Aug-14	31-Aug-14	29-Aug-14	31-Aug-14	0	Bridge D1 Deck Waterproofing																	
1013-1716	Bridge D1 Deck Paving & Marking	9	01-Sep-14	09-Sep-14	01-Sep-14	09-Sep-14	0	Bridge D1 Deck Paving & Marking																	
<b>Bridge F1A</b>																									
1013-1256	Bridge F1A Parapet North F1-N09 to F1-N03 - Concreting (F1)	0	11-Jun-14 A	30-Jun-14 A	22-Jul-14	22-Jul-14		Bridge F1A Parapet North F1-N09 to F1-N03 - Concreting (F1)																	
1013-1903	Bridge F1A Parapet North F1-N01 to F1-N02 - Concreting (F3)	0	04-Jul-14 A	08-Jul-14 A	27-Jul-14	27-Jul-14		Bridge F1A Parapet North F1-N01 to F1-N02 - Concreting (F3)																	
1013-1258	Bridge F1A South Wing Extension Formwork + Casting	12	15-May-14 A	02-Aug-14	02-Aug-14	15-Aug-14	11	Bridge F1A South Wing Extension Formwork + Casting																	
1013-1866	Bridge F1A Int. Double Noise Encl. Install Columns (North)	12	21-Jul-14	02-Aug-14	06-Aug-14	19-Aug-14	14	Bridge F1A Int. Double Noise Encl. Install Columns (North)																	
1013-1867	Bridge F1A Int. Double Noise Encl. Install Columns (South)	12	31-Jul-14	13-Aug-14	13-Aug-14	26-Aug-14	11	Bridge F1A Int. Double Noise Encl. Install Columns (South)																	
1013-1868	Bridge F1A Int. Double Noise Encl. Install Beams	12	07-Aug-14	20-Aug-14	20-Aug-14	02-Sep-14	11	Bridge F1A Int. Double Noise Encl. Install Beams																	
1013-1872	Bridge F1A Road Lighting	9	11-Aug-14	20-Aug-14	29-Aug-14	08-Sep-14	16	Bridge F1A Road Lighting																	
1013-1873	Bridge F1A Parapet Railing	9	11-Aug-14	20-Aug-14	29-Aug-14	08-Sep-14	16	Bridge F1A Parapet Railing																	
1013-1265.1	Bridge F1A - Seal Deck Opening + Waterproofing Preparation	9	10-Aug-14	18-Aug-14	23-Aug-14	31-Aug-14	13	Bridge F1A - Seal Deck Opening + Waterproofing Preparation																	
1013-1887	Bridge F1A MJ at Pier F3A	6	12-Aug-14	18-Aug-14	25-Aug-14	30-Aug-14	11	Bridge F1A MJ at Pier F3A																	
1013-1265	Bridge F1A Deck Waterproofing	3	19-Aug-14	21-Aug-14	01-Sep-14	03-Sep-14	13	Bridge F1A Deck Waterproofing																	
1013-1266	Bridge F1A Deck Paving & Marking	6	22-Aug-14	27-Aug-14	04-Sep-14	09-Sep-14	13	Bridge F1A Deck Paving & Marking																	
<b>Bridge F2A</b>																									
1013-1367	Bridge F2A South Wing Extension Formwork + Casting	6	20-May-14 A	26-Jul-14	04-Aug-14	09-Aug-14	12	Bridge F2A South Wing Extension Formwork + Casting																	
1013-1376	Bridge F2A Int. Double Noise Encl. Install Columns (North)	7	12-Jul-14 A	28-Jul-14	04-Aug-14	11-Aug-14	12	Bridge F2A Int. Double Noise Encl. Install Columns (North)																	
1013-1377	Bridge F2A Int. Double Noise Encl. Install Columns (South)	12	14-Jul-14 A	02-Aug-14	04-Aug-14	16-Aug-14	12	Bridge F2A Int. Double Noise Encl. Install Columns (South)																	
1013-1378	Bridge F2A Int. Double Noise Encl. Install Beams	11	29-Jul-14	09-Aug-14	12-Aug-14	23-Aug-14	12	Bridge F2A Int. Double Noise Encl. Install Beams																	
1013-1874	Bridge F2A Road Lighting	9	31-Jul-14	09-Aug-14	29-Aug-14	08-Sep-14	25	Bridge F2A Road Lighting																	
1013-1875	Bridge F2A Parapet Railing	9	31-Jul-14	09-Aug-14	29-Aug-14	08-Sep-14	25	Bridge F2A Parapet Railing																	
1013-1888	Bridge F2A MJ at Pier F5	6	09-Aug-14	15-Aug-14	23-Aug-14	29-Aug-14	12	Bridge F2A MJ at Pier F5																	
1013-1374.1	Bridge F2A - Seal Deck Opening + Waterproofing Preparation	6	10-Aug-14	15-Aug-14	24-Aug-14	29-Aug-14	14	Bridge F2A - Seal Deck Opening + Waterproofing Preparation																	
1013-1374	Bridge F2A Deck Waterproofing	3	16-Aug-14	18-Aug-14	30-Aug-14	01-Sep-14	14	Bridge F2A Deck Waterproofing																	
1013-1375	Bridge F2A Deck Paving & Marking	6	19-Aug-14	25-Aug-14	02-Sep-14	08-Sep-14	12	Bridge F2A Deck Paving & Marking																	
<b>Bridge F3A</b>																									
1013-1889	Bridge F3A MJ at Pier F8	6	15-Aug-14	21-Aug-14	23-Aug-14	29-Aug-14	7	Bridge F3A MJ at Pier F8																	
1013-1428.1	Bridge F3A - Seal Deck Opening + Waterproofing Preparation	6	16-Aug-14	21-Aug-14	24-Aug-14	29-Aug-14	8	Bridge F3A - Seal Deck Opening + Waterproofing Preparation																	
1013-1428	Bridge F3A Deck Waterproofing	3	22-Aug-14	24-Aug-14	30-Aug-14	01-Sep-14	8	Bridge F3A Deck Waterproofing																	
1013-1430	Bridge F3A Deck Paving & Marking	6	25-Aug-14	30-Aug-14	02-Sep-14	08-Sep-14	7	Bridge F3A Deck Paving & Marking																	
<b>Bridge F5/F4</b>																									
1013-1436	Bridge F4/F5 - Pier F8 to F10 - Top Slab Formworks	6	11-Jun-14 A	25-Jul-14	26-Jul-14	31-Jul-14	6	Bridge F4/F5 - Pier F8 to F10 - Top Slab Formworks																	
1013-1439	Bridge F4/F5 - Pier F8 to F10 - Top Slab Rebar Fixing	12	19-Jul-14 A	31-Jul-14	15-Aug-14	26-Aug-14	26	Bridge F4/F5 - Pier F8 to F10 - Top Slab Rebar Fixing																	
1013-1441	Bridge F4/F5 - Pier F8 to F10 - Top Slab Concreting	6	29-Jul-14	03-Aug-14	24-Aug-14	29-Aug-14	26	Bridge F4/F5 - Pier F8 to F10 - Top Slab Concreting																	
1013-2103	Bridge F4/F5 - Pier F8 to F10 - Longitudinal Stitch/ Tie-in	6	04-Aug-14	09-Aug-14	30-Aug-14	04-Sep-14	26	Bridge F4/F5 - Pier F8 to F10 - Longitudinal Stitch/ Tie-in																	
1013-1446	Bridge F4 - Pier F10 to F15 Diaphragm	0	20-Jun-14 A	15-Jul-14 A	15-Aug-14	15-Aug-14		Bridge F4 - Pier F10 to F15 Diaphragm																	
1013-2160	Bridge F4 - Pier F10 to F11 - Top Slab Formworks	9	26-Jul-14	05-Aug-14	01-Aug-14	11-Aug-14	5	Bridge F4 - Pier F10 to F11 - Top Slab Formworks																	
1013-2162	Bridge F4 - Pier F11 to F12 - Top Slab Formworks	9	30-Jul-14	08-Aug-14	05-Aug-14	14-Aug-14	5	Bridge F4 - Pier F11 to F12 - Top Slab Formworks																	

- Remaining Level of Effort
- Actual Level of Effort
- █ Actual Work
- █ Remaining Work
- █ Critical Remaining Work
- ◆ Milestone

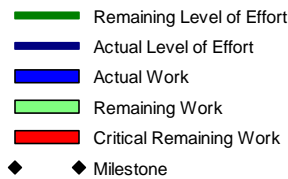
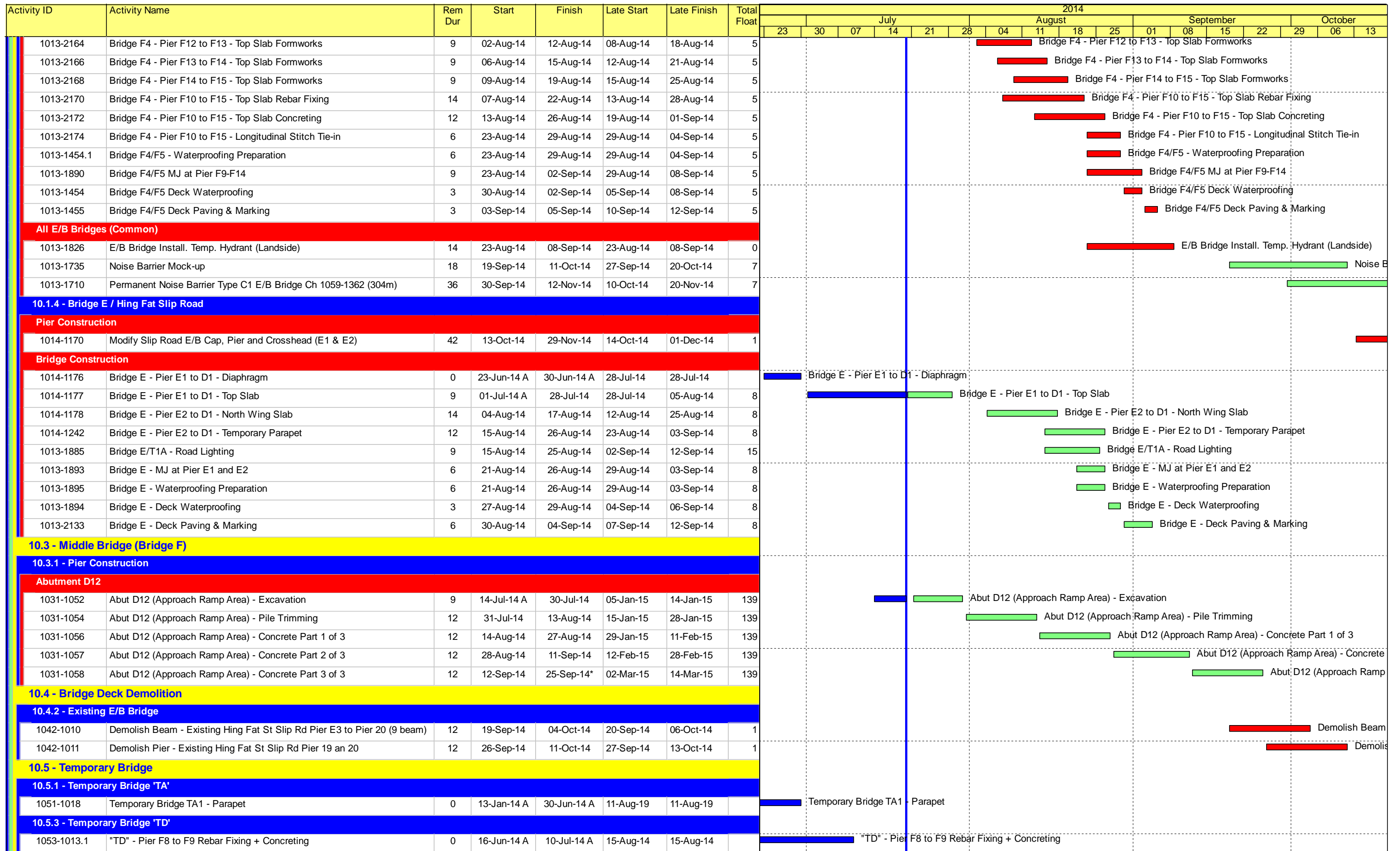
**Contract HY/2009/19**

**Three Month Rolling Programme (20 Jul to 19 Oct 2014)**

3MRP

3MRP - Jul 2014 to Oct 2014

Page 8 of 10



**Contract HY/2009/19**

**Three Month Rolling Programme (20 Jul to 19 Oct 2014)**

3MRP

3MRP - Jul 2014 to Oct 2014

Page 9 of 10

Activity ID	Activity Name	Rem Dur	Start	Finish	Late Start	Late Finish	Total Float	2014																	
								July					August					September				October			
								23	30	07	14	21	28	04	11	18	25	01	08	15	22	29	06	13	
1053-1013.2	"TD" - Pier F9 to F10 Rebar Fixing + Concreting	0	30-Jun-14 A	17-Jul-14 A	11-Aug-19	11-Aug-19																			
1053-1014	"TD" - Pier F8 to F10 Parapet	12	21-Jul-14	02-Aug-14	21-Aug-14	03-Sep-14	27																		
1053-1021	"TD" - Pier F11, F12, F13 and F14 Tower Erection	0	27-May-14 A	09-Jul-14 A	31-Jul-14	31-Jul-14																			
1053-1061	"TD" - Pier F10 to F14 Beam Erection	0	23-Jun-14 A	14-Jul-14 A	31-Jul-14	31-Jul-14																			
1053-1062	"TD" - Pier F10 to F14 Bond Deck Erection	1	05-Jul-14 A	21-Jul-14	31-Jul-14	31-Jul-14	9																		
1053-1063	"TD" - Pier F10 to F14 Rebar Fixing	12	15-Jul-14 A	04-Aug-14	01-Aug-14	14-Aug-14	9																		
1053-1064	"TD" - Pier F10 to F14 Concrete Deck	12	28-Jul-14	11-Aug-14	08-Aug-14	21-Aug-14	9																		
1053-1065	"TD" - Pier F10 to F14 Parapet	12	04-Aug-14	18-Aug-14	29-Aug-14	12-Sep-14	21																		
1053-1150	"TD" - F6-F5 Tower + Beam Erection	7	01-Aug-14	07-Aug-14	09-Aug-14	15-Aug-14	8																		
1053-1152	"TD" - F6-F5 Bond Deck Erection	5	08-Aug-14	12-Aug-14	16-Aug-14	20-Aug-14	8																		
1053-1154	"TD" - F6-F5 Rebar Fixing + Concreting	9	13-Aug-14	21-Aug-14	21-Aug-14	29-Aug-14	8																		
1053-1140	"TD" - F6-F7 Tower + Beam Erection	7	25-Jul-14	31-Jul-14	02-Aug-14	08-Aug-14	8																		
1053-1142	"TD" - F6-F7 Bond Deck Erection	5	03-Aug-14	07-Aug-14	11-Aug-14	15-Aug-14	8																		
1053-1144	"TD" - F6-F7 Rebar Fixing + Concreting	9	08-Aug-14	16-Aug-14	16-Aug-14	24-Aug-14	8																		
1053-1130	"TD" - F7-F8 Tower + Beam Erection	5	17-Jul-14 A	24-Jul-14	28-Jul-14	01-Aug-14	8																		
1053-1132	"TD" - F7-F8 Bond Deck Erection	5	25-Jul-14	29-Jul-14	02-Aug-14	06-Aug-14	8																		
1053-1134	"TD" - F7-F8 Rebar Fixing + Concreting	9	30-Jul-14	07-Aug-14	07-Aug-14	15-Aug-14	8																		
1053-1160	"TD" - F5 to F8 Parapet	9	16-Aug-14	24-Aug-14	24-Aug-14	01-Sep-14	8																		
1053-1010.93	"TD" - Deck Paving & Marking	6	25-Aug-14	30-Aug-14	04-Sep-14	09-Sep-14	10																		
<b>10.6 - Tunnel Approach Ramp</b>																									
<b>10.6.1 - Approach Ramp (Excluding Portion IIB)</b>																									
<b>Bored Piles</b>																									
1061-1670	Pre-drilling Approach Ramp Bored Piles Except Oil St and Portion IIB	18	19-Jul-13 A	09-Aug-14*	10-Oct-14	30-Oct-14	67																		
1061-1920	Bored Pile Ramp - BM30	0	10-Jun-14 A	27-Jun-14 A	19-Aug-14	19-Aug-14																			
1061-1930	Bored Pile Ramp - BM10	0	16-Jun-14 A	28-Jun-14 A	11-Aug-19	11-Aug-19																			
1061-1950	Bored Pile Ramp - BM22	0	20-Jun-14 A	03-Jul-14 A	11-Aug-19	11-Aug-19																			
1061-1960	Bored Pile Ramp - BM33	0	04-Jul-14 A	15-Jul-14 A	11-Aug-19	11-Aug-19																			
1061-1990	Bored Pile Ramp - BS17	0	28-Jun-14 A	14-Jul-14 A	11-Aug-19	11-Aug-19																			
1061-2050	Bored Pile Ramp - BM09	10	15-Jul-14 A	31-Jul-14	19-Aug-14	30-Aug-14	26																		
1061-1970	Bored Pile Ramp - BM31	15	21-Jul-14	06-Aug-14	01-Sep-14	18-Sep-14	36																		
1061-2060	Bored Pile Ramp - BN32	15	01-Aug-14	19-Aug-14	30-Aug-14	18-Sep-14	26																		
1061-1980	Bored Pile Ramp - BN25	15	07-Aug-14	23-Aug-14	19-Sep-14	08-Oct-14	36																		
1061-2070	Bored Pile Ramp - BN34	15	19-Aug-14	05-Sep-14	19-Sep-14	08-Oct-14	26																		
1061-2000	Bored Pile Ramp - BM12	15	25-Aug-14	11-Sep-14	09-Oct-14	25-Oct-14	36																		
1061-2080	Bored Pile Ramp - BN33	15	05-Sep-14	24-Sep-14	09-Oct-14	25-Oct-14	26																		
1061-2010	Bored Pile Ramp - BM11	15	12-Sep-14	29-Sep-14	27-Oct-14	12-Nov-14	36																		
1061-2090	Bored Pile Ramp - BN35	15	24-Sep-14	14-Oct-14	27-Oct-14	12-Nov-14	26																		
1061-2020	Bored Pile Ramp - BM16	15	30-Sep-14	18-Oct-14	13-Nov-14	29-Nov-14	36																		
1061-2100	Bored Pile Ramp - BM08	15	14-Oct-14	31-Oct-14*	13-Nov-14	29-Nov-14	26																		
<b>10.7 - Section X - Miscellaneous Works</b>																									
<b>10.7.1 - TTM Stages</b>																									
1071-1005	TTM Stage 2A - TMLG / TD / Police Consultation and Endorsement	9	17-Jul-14 A	30-Jul-14	22-Jul-14	31-Jul-14	1																		
1071-1010	TTM Stage 2A - TTM Enabling Works + Trial Run	3	10-Sep-14	12-Sep-14	10-Sep-14	12-Sep-14	0																		
1071-1020	TTM Stage 2A - Hing Fat Slip Road Divert to New E/B Bridge through 'TA'	0		12-Sep-14*		12-Sep-14	0																		

- █ Remaining Level of Effort
- █ Actual Level of Effort
- █ Actual Work
- █ Remaining Work
- █ Critical Remaining Work
- ◆ Milestone

**Contract HY/2009/19**

**Three Month Rolling Programme (20 Jul to 19 Oct 2014)**

3MRP

3MRP - Jul 2014 to Oct 2014

Page 10 of 10

Activity Name	Duration (cal days)	Start	Finish	Total Float	2011		2012		2013		2014		2015		2016	
					Q1	Q2	Q3	Q4	Q1	Q2	Q3	Q4	Q1	Q2	Q3	Q4
<b>HY/2009/15 - Works Programme Rev. K (DD:20-Feb-14) 1st Submission</b>																
<b>Works in East Ventilation Adit - Based on Alternative Method</b>																
EAST VENTILATION ADIT - SUMMARY	7744	08-Apr-13 A	20-Jun-14	184												
<b>Works in T81 Area (Portion 13A, 13B) &amp; CCT at Portion 1,2,4,6,22</b>																
<b>T81 - Temporary Reclamation</b>																
T81 - TEMPORARY RECLAMATION SUMMARY	1254	07-Jan-11 A	13-Aug-11 A													
<b>T81 - Diaphragm Wall</b>																
T81 DIAPHRAGM WALL & PUMP TEST SUMMARY	2154	19-Mar-11 A	30-Dec-11 A													
<b>T81 - ELS Works</b>																
T81 ELS SUMMARY	1974	09-Jan-12 A	16-Apr-12 A													
<b>T81 - CCT RC Structure</b>																
T81 CCT - SUMMARY	1004	12-Jan-12 A	19-Jun-12 A													
<b>EV Adit at Portion 1,2,6,22</b>																
EV Adit PORTION 1 & 2	276	12-Jun-12 A	17-Jul-12 A													
<b>T81 - Removal of Temp. Reclamation</b>																
T81 - REMOVAL OF TEMP. RECLAMATION SUMMARY	1339	04-Jun-12 A	15-Oct-12 A													
REMOVAL OF TEMP. RECLAMATION T81 (MAX=3110)	614	25-Jan-11 A	20-Sep-12 A													
DURATION OF TEMP. RECLAMATION T81E (EXCLUDING T81W MAX=900)	5578	13-Mar-11 A	20-Sep-12 A													
<b>Works in T82 Area (Portion 13A, 13B)</b>																
<b>T82 - Temporary Reclamation</b>																
T82 - TEMPORARY RECLAMATION SUMMARY	4304	16-Apr-12 A	25-Jun-13 A													
<b>T82 - Diaphragm Wall</b>																
T82 - DIAPHRAGM WALL SUMMARY	2814	21-Feb-12 A	23-Aug-13 A													
<b>T82 - ELS Works</b>																
T82 ELS SUMMARY	876	17-Sep-13 A	13-Dec-13 A													
<b>T82 - CCT RC Structure</b>																
T82 - CCT SUMMARY	1234	23-Nov-13 A	25-Mar-14	-594												
<b>T82 - Removal of Temp. Reclamation</b>																
T82 REMOVAL OF TEMP. RECLAMATION SUMMARY	824	11-Mar-14	31-Aug-14	-1204												
REMOVAL OF TEMP. RECLAMATION T82 (MAX=3110)	1234	15-Jan-11 A	31-Aug-14	-1224												
DURATION OF TEMP. RECLAMATION T21 (MAX=900)	12234	25-Jan-11 A	31-Aug-14	-1223												
<b>Works in T81/T82 - Cable Trough/Maintenance Walkway</b>																
T82 CABLE TROUGH SUMMARY	2184	06-Jun-14 A	11-Aug-14	-584												
<b>Works in T84/ME4 Area (Portion 14A, 14B, 15, 23)</b>																
<b>T84 + ME4 (T84+ &amp; T26) Temporary Reclamation</b>																
T84 - TEMPORARY RECLAMATION SUMMARY	3644	20-Jan-11 A	16-Apr-12 A													
<b>T84ME4 - Diaphragm Wall</b>																
DIAPHRAGM WALL SUMMARY	3104	23-Dec-11 A	27-Oct-12 A													
<b>T84ME4 - ELS Works &amp; Rock Excavation</b>																
T84 - ELS + ROCK EXCAVATION SUMMARY	3784	19-Oct-12 A	22-Oct-13 A													
<b>T84ME4 - Mined Tunnel East Portal Works</b>																
MT EAST PORTAL WORKS SUMMARY	2014	16-Aug-13 A	13-Mar-14	-2054												
<b>T84ME4 - CCT RC Structure</b>																
T84ME4 - CWB CCT SUMMARY	3104	20-May-13 A	06-Apr-14	-2054												
T84ME4 - SCL CCT SUMMARY	1254	20-Dec-13 A	04-May-14	-2054												
<b>T84ME4 - Removal of Temporary Reclamation</b>																
DURATION OF TEMP. RECLAMATION T84 (MAX=1020)	1104	24-Apr-11 A	29-Jun-14	-2184												
REMOVAL OF TEMP. RECLAMATION SUMMARY	644	28-Apr-14	30-Jun-14	-2184												
<b>Re-Provision of Permanent Jetty/Floating Pontoon</b>																
RE-PROVISION OF PERMANENT JETTY	1904	20-Feb-14	23-Aug-14	4144												
<b>CHT Protection Works at Location A,B,C</b>																
<b>ADMS Installation</b>																
ADMS INSTALLATION - SUMMARY	744	01-Feb-11 A	15-Apr-11 A													
<b>Standby Dewatering System(CSD: Grout Curtain Cut-off Wall Scheme)</b>																
STANDBY DEWATERING SYSTEM - SUMMARY	4324	19-Apr-11 A	13-Jul-12 A													
<b>VO.NO. 8 - Steel Weights &amp; Aluminum Cladding Inside CHT</b>																
VO No. 8 & 14 - STEEL WEIGHTS & CLADDING SUMMARY	3784	20-Aug-11 A	31-Aug-12 A													
<b>Works in TPCWAE Area (Portion 20A, 20B)</b>																
<b>TPCWAE - Temporary Reclamation</b>																
TPCWAE - TEMPORARY RECLAMATION SUMMARY	1434	08-Dec-10 A	07-Jun-11 A													
<b>TPCWAE - Diaphragm Wall</b>																
DIAPHRAGM WALL & PUMP TEST SUMMARY	2524	13-Jun-11 A	30-Jan-12 A													
<b>TPCWAE - ELS Works &amp; Soft Excavation</b>																
TPCWAE - ELS SUMMARY (EXCEPT ROCK EXCAVATION)	2404	17-Jan-12 A	12-Sep-12 A													
<b>TPCWAE - Rock Excavation</b>																
TPCWAE - ROCK EXCAVATION SUMMARY	2764	19-Jun-12 A	05-Apr-13 A													
<b>MT West Portal Works</b>																
MT WEST PORTAL WORKS SUMMARY	3754	08-Nov-12 A	04-Dec-13 A													
<b>CCT RC Structure</b>																
CCT - AREA A	3094	24-Jan-13 A	18-May-14	-1274												
CCT - AREA B, STITCHING AREA	1114	27-Nov-13 A	23-Mar-14	-1274												
<b>Removal of Temporary Reclamation</b>																
REMOVAL OF RECLAMATION SUMMARY	434	15-Mar-14	30-Apr-14	-1434												
<b>Works in TPCWAW Area</b>																
<b>TPCWAW - Temporary Reclamation</b>																
TPCWAW - TEMPORARY RECLAMATION SUMMARY	864	02-May-14	26-Jun-14	04												
<b>TPCWAW - Diaphragm Wall</b>																
Diaphragm Wall & Pump Test Summary	1934	27-Jul-14	04-Feb-15	04												
<b>TPCWAW - ELS Works</b>																
TPCWAW - ELS SUMMARY (EXCEPT ROCK EXCAVATION)	884	06-Feb-15	04-May-15	04												
<b>TPCWAW - ROCK EXCAVATION</b>																
TPCWAW - ROCK EXCAVATION SUMMARY	1044	29-Apr-15	19-Aug-15	14												
<b>TPCWAW - CCT RC Structure</b>																
TPCWAW - CCT SUMMARY	944	24-Jul-15	25-Oct-15	04												
<b>TPCWAW - Removal of Temporary Reclamation</b>																
DURATION OF TEMP. RECLAMATION T23 (MAX=1650)	18124	11-Feb-11 A	27-Jun-16	04												
DURATION OF TEMP. RECLAMATION TPCWAW (MAX=1650)	6204	09-May-14	27-Jun-16	04												
REMOVAL OF TEMP. RECLAMATION SUMMARY	964	19-Oct-15	27-Jan-16	04												
<b>Works for Mined Tunnel (Portion 16, 17, 10)</b>																
<b>(SR) Slip Road 9 Tunnel, Total L = 147m, less 13m at WP and less 5m at EP= 149m Tunnel Excav</b>																
SR - MINED TUNNEL WORKS SUMMARY	514	19-Oct-13 A	17-Mar-15	2304												
<b>(EB) East Bound Tunnel, L = 167m, less 7m at WP and less 1.5m at EP= 158.5m Tunnel Excav</b>																
EB - MINED TUNNEL WORKS SUMMARY	744	19-Oct-13 A	02-Nov-15	04												
<b>(WB) West Bound Tunnel, L = 163m, less 7m at WP and less 1.5m at EP= 144.5m Tunnel Excav</b>																
WB - MINED TUNNEL WORKS SUMMARY	744	19-Oct-13 A	02-Nov-15	04												

Actual Level of Effort  
 Remaining Level of Effort  
 Milestone  
 Milestone

**China State Construction Engineering (HK) Ltd :**  
**HY/2009/15 - CWB Tunnel(CBTS)**  
**EXECUTIVE SUMMARY PROGRAMME**

Prepared by William Caluza			
Date	Revision	Checked	Approved
20-Feb-14	Executive Summary Progra...	GC	KC





Activity ID	Activity Name	Orig Dur	Early Start	Early Finish	Total Float	Calendar	Activity % Complete	2014				2015
								Sep	Oct	Nov	Dec	Jan
<b>HK/2012/08 3M Rolling Programme [Sep 2014 to Nov 2014] based on Rev.3/1 (DD 01Sep14)</b>												
<b>Key Dates and Milestone Dates</b>												
<b>Sections of Works Completion (Updated to EOT Order No.3)</b>												
KD10920	Completion of Section VIB	0		04-Sep-14*	0	C3 - 7D w/o holiday	0%					
<b>Planned Sections of Works Completion</b>												
KD10180	Planned Section VIB Completion - Demolish Pump House	0		04-Sep-14	0	C3 - 7D w/o holiday	0%					
<b>Dredging and Reclamation</b>												
<b>Marine Work Construction</b>												
<b>Dredging</b>												
<b>Dredging - Zone D</b>												
MAR11880	Zone D - Remove existing rock armour [S8-S11]	65	16-Apr-14 A	07-Nov-14	28	C3 - 7D w/o holiday	0%					
MAR11900	Zone D - dredging [R8-R10] for caisson 2F, 1C and 1A	22	02-Dec-13 A	11-Oct-14	192	C3 - 7D w/o holiday	0%					
MAR11910	Zone D - dredging [R11-R12] for caisson 2 and 1A-L	2	05-Oct-14	06-Oct-14	28	C3 - 7D w/o holiday	0%					
MAR12685	Zone D - Final Hydrographic Survey [R11-R12]	6	07-Oct-14	13-Oct-14	24	C3 - 6D w/ holiday	0%					
<b>Seawall Construction</b>												
<b>Seawall Construction - Zone D</b>												
MAR11835	Zone D - fill rock mound for Seawall 1C	8	03-Oct-14	10-Oct-14	0	C3 - 7D w/o holiday	0%					
MAR11837	Zone D - lay toe block and level stone for Seawall 1C	12	11-Oct-14	22-Oct-14	0	C3 - 7D w/o holiday	0%					
MAR11839	Zone D - fill temp. rock bund at Seawall 1C - fill rock to +4.0mPD	6	18-Nov-14	23-Nov-14	0	C3 - 7D w/o holiday	0%					
MAR11841	Zone D - fill rock mound for Seawall 1A	8	01-Oct-14	08-Oct-14	45	C3 - 7D w/o holiday	0%					
MAR11842	Zone D - lay toe block and level stone for Seawall 1A	12	09-Oct-14	20-Oct-14	45	C3 - 7D w/o holiday	0%					
MAR11843	Zone D - fill rock mound for Seawall 2	8	01-Oct-14	08-Oct-14	84	C3 - 7D w/o holiday	0%					
MAR11844	Zone D - lay toe block and level stone for Seawall 2	20	09-Oct-14	31-Oct-14	74	C3 - 6D w/ holiday	0%					
MAR11885	Zone D - deliver and Install Caisson Seawall 2F	5	30-Aug-14 A	04-Sep-14	0	C3 - 7D w/o holiday	20%					
MAR11886	Zone D - Caisson Seawall 2F - grouting to recess between piles & base slab and remove buoyancy tanks	28	05-Sep-14	02-Oct-14	20	C3 - 7D w/o holiday	0%					
MAR11888	Zone D - Caisson Seawall 2F - fill type A rockfill (-10mPD to +1.3mPD)	20	03-Oct-14	25-Oct-14	17	C3 - 6D w/ holiday	0%					
MAR11890	Zone D - Caisson Seawall 2F - lay geotextile and filter (-10mPD to +1.3mPD)	7	27-Oct-14	03-Nov-14	17	C3 - 6D w/ holiday	0%					
MAR11940	Zone D - deliver and Install Caisson Seawall 1C	3	23-Oct-14	25-Oct-14	0	C3 - 6D w/ holiday	0%					
MAR11945	Zone D - Caisson Seawall 1C - fill type A rockfill (-10mPD to +1.3mPD)	13	27-Oct-14	10-Nov-14	0	C3 - 6D w/ holiday	0%					
MAR11947	Zone D - Caisson Seawall 1C - lay geotextile and filter (-10mPD to +1.3mPD)	6	11-Nov-14	17-Nov-14	0	C3 - 6D w/ holiday	0%					
MAR11950	Zone D - complete fabrication of Caisson Seawall 1A and ready for delivery	0		17-Oct-14*	0	C3 - 6D w/ holiday	0%					
MAR11960	Zone D - deliver and Install Caisson Seawall 1A	3	06-Nov-14	08-Nov-14	25	C3 - 6D w/ holiday	0%					
MAR11980	Zone D - deliver and Install Caisson Seawall 2	3	30-Nov-14	02-Dec-14	61	C3 - 7D w/o holiday	0%					
MAR12020	Zone D - complete fabrication of Caisson Seawall 1A-L and ready for delivery	0		25-Nov-14*	0	C3 - 6D w/ holiday	0%					
<b>Filling</b>												
<b>Filling - Zone D</b>												
MAR12040	Zone D - Sorted Public Fill up to +2.5mPD (south area behind caisson 2F and 1C)	19	24-Nov-14	15-Dec-14	0	C3 - 6D w/ holiday	0%					

Data Date: 01-Sep-14

- Current Milestone
- Actual Work
- Critical Remaining Work
- Remaining Work
- Remaining Level of Effort

**3-Month Rolling Programme (Sep 2014 to Nov 2014)**  
**(For Non-CRIII Area)**

Date	Revision	Checked	Approved
01-Sep-14	Rev. 3/1		





Activity ID	Activity Name	Orig Dur	Early Start	Early Finish	Total Float	Calendar	Activity % Complete	2014				2015
								Sep	Oct	Nov	Dec	Jan
<b>Works for Section Completion</b>												
<b>Construction</b>												
<b>Section II - MVB Structure</b>												
<b>Section II - MVB Substructure - Design, Submission and Approval</b>												
SII10180	Sec II - MVB - MS for pumping test - prepare and submit to ICE	2	16-Oct-14	17-Oct-14	24	C3 - 7D w/o holiday	0%					
SII10200	Sec II - MVB - MS for pumping test - ICE check & issue cert	14	18-Oct-14	31-Oct-14	24	C3 - 7D w/o holiday	0%					
SII10220	Sec II - MVB - MS for pumping test - Eng comment and approve	28	01-Nov-14	28-Nov-14	24	C3 - 7D w/o holiday	0%					
SII10280	Sec II - MVB - Temp work design for bulk exc & ELS - Eng comment and approve	28	07-Jul-14 A	06-Sep-14	134	C3 - 7D w/o holiday	78.57%					
SII12321	Sec II - MVB - Temp works for ELS & bulk exc - Prepare tender and sub-contract	120	23-Jun-14 A	30-Nov-14	49	C3 - 7D w/o holiday	24.17%					
SII12322	Sec II - MVB - Temp works for ELS & bulk exc - Award of sub-contract	0		30-Nov-14	49	C3 - 7D w/o holiday	0%					
<b>MVB Substructure - Diaphragm Wall and Sheetpile Wall</b>												
SII10440	Sec II - MVB - predrilling and ground pretreatment for Dwall	158	17-Mar-14 A	29-Nov-14	1227	C3 - 6D w/ holiday	52.53%					
SII10480	Sec II - MVB A - construct Dwall [P1-P12, P34-P40] (1.5m thk on rock)	177	28-May-14 A	05-Dec-14	0	C3 - 6D w/ holiday	54.8%					
SII10500	Sec II - MVB A - contact grout / fissure grout / install pumping well	54	14-Oct-14	15-Dec-14	6	C3 - 6D w/ holiday	0%					
SII10540	Sec II - MVB B - construct Dwall [P13-P33] (1.5m thk on rock)	187	16-Apr-14 A	04-Dec-14	10	C3 - 6D w/ holiday	57.75%					
SII10560	Sec II - MVB B - contact grout / fissure grout / install pumping well	54	14-Oct-14	15-Dec-14	6	C3 - 6D w/ holiday	0%					
SII10590	Sec II - MVB A&B - grout curtain and fissure grout	56	13-Oct-14	16-Dec-14	7	C3 - 6D w/ holiday	0%					
SII10624	Sec II - SCL Enabling Works - Construct Guide Wall - CW2	4	18-Sep-14	22-Sep-14	6	C3 - 6D w/ holiday	0%					
SII10638	Sec II - SCL Enabling Works - construct Dwall - CW2 [1 panel] (1.5m thk)	18	23-Sep-14	15-Oct-14	6	C3 - 6D w/ holiday	0%					
<b>MVB Substructure - Diaphragm Wall - Construction Sequences</b>												
<b>Group 1</b>												
SII-10150	Sec II - MVB - Dwall P31	21	25-Aug-14 A	17-Sep-14	17	C3 - 6D w/ holiday	33.33%					
SII-10160	Sec II - MVB - Dwall P18	20	08-Sep-14	03-Oct-14	17	C3 - 6D w/ holiday	0%					
SII-10170	Sec II - MVB - Dwall P24	18	23-Sep-14	15-Oct-14	17	C3 - 6D w/ holiday	0%					
SII-10180	Sec II - MVB - Dwall P25	20	20-Oct-14	11-Nov-14	17	C3 - 6D w/ holiday	0%					
SII-10190	Sec II - MVB - Dwall P26	17	13-Nov-14	02-Dec-14	17	C3 - 6D w/ holiday	0%					
<b>Group 2</b>												
SII-10290	Sec II - MVB - Dwall P27	23	11-Aug-14 A	05-Sep-14	15	C3 - 6D w/ holiday	78.26%					
SII-10300	Sec II - MVB - Dwall P22	21	20-Oct-14	12-Nov-14	15	C3 - 6D w/ holiday	0%					
SII-10310	Sec II - MVB - Dwall P23	19	13-Nov-14	04-Dec-14	15	C3 - 6D w/ holiday	0%					
<b>Group 3</b>												
SII-11380	Sec II - MVB - Dwall P31	23	22-Aug-14 A	17-Sep-14	69	C3 - 6D w/ holiday	39.13%					
SII-11400	Sec II - MVB - Dwall P32	11	18-Sep-14	30-Sep-14	69	C3 - 6D w/ holiday	0%					
<b>Group 4</b>												
SII-10390	Sec II - MVB - Dwall P2	21	11-Aug-14 A	05-Sep-14	14	C3 - 6D w/ holiday	76.19%					
SII-10400	Sec II - MVB - Dwall P35	20	29-Aug-14 A	25-Sep-14	14	C3 - 6D w/ holiday	0%					
SII-10410	Sec II - MVB - Dwall P06 (seawall)	20	04-Aug-14 A	12-Sep-14	14	C3 - 6D w/ holiday	50%					
SII-10420	Sec II - MVB - Dwall P41	16	16-Sep-14	06-Oct-14	14	C3 - 6D w/ holiday	0%					
SII-10430	Sec II - MVB - Dwall P3	19	19-Sep-14	13-Oct-14	14	C3 - 6D w/ holiday	0%					
SII-10440	Sec II - MVB - Dwall P12	13	30-Sep-14	16-Oct-14	14	C3 - 6D w/ holiday	0%					
SII-10450	Sec II - MVB - Dwall P09	17	29-Sep-14	20-Oct-14	14	C3 - 6D w/ holiday	0%					



Activity ID	Activity Name	Orig Dur	Early Start	Early Finish	Total Float	Calendar	Activity % Complete	2014				2015
								Sep	Oct	Nov	Dec	Jan
SII-10460	Sec II - MVB - Dwall P40	19	07-Oct-14	28-Oct-14	14	C3 - 6D w/ holiday	0%					
SII-10470	Sec II - MVB - Dwall P05 (seawall)	11	21-Oct-14	01-Nov-14	14	C3 - 6D w/ holiday	0%					
SII-10480	Sec II - MVB - Dwall P34	18	17-Oct-14	06-Nov-14	14	C3 - 6D w/ holiday	0%					
SII-10490	Sec II - MVB - Dwall P12A	23	22-Oct-14	17-Nov-14	14	C3 - 6D w/ holiday	0%					
SII-10492	Sec II - MVB - Dwall P7	14	03-Nov-14	18-Nov-14	14	C3 - 6D w/ holiday	0%					
SII-10494	Sec II - MVB - Dwall P39	23	30-Oct-14	25-Nov-14	14	C3 - 6D w/ holiday	0%					
SII-10496	Sec II - MVB - Dwall P33	24	06-Nov-14	03-Dec-14	14	C3 - 6D w/ holiday	0%					
SII-10500	Sec II - MVB - Dwall P4	15	19-Nov-14	05-Dec-14	14	C3 - 6D w/ holiday	0%					
<b>MVB Substructure - Bored Pile and Prebored H-Pile</b>												
SII10320	Sec II - MVB A&B - Predrilling for bored pile	90	10-May-14 A	15-Sep-14	52	C3 - 6D w/ holiday	86.67%					
SII10340	Sec II - MVB A&B - Construct bored piles	146	26-Jun-14 A	17-Dec-14	4	C3 - 6D w/ holiday	38.36%					
SII10360	Sec II - MVB A&B - bored pile sonic test, interface core & full core	90	11-Sep-14	29-Dec-14	16	C3 - 6D w/ holiday	0%					
<b>MVB Substructure - Bored Pile - Construction Sequences</b>												
<b>Group 1</b>												
SII-11040	Ssec II - MVB - Bored Pile BC2-B	14	01-Sep-14	17-Sep-14	10	C3 - 6D w/ holiday	0%					
SII-11050	Ssec II - MVB - Bored Pile BC4-B	15	06-Sep-14	24-Sep-14	10	C3 - 6D w/ holiday	0%					
SII-11060	Ssec II - MVB - Bored Pile BC1-A	16	26-Sep-14	16-Oct-14	10	C3 - 6D w/ holiday	0%					
SII-11070	Ssec II - MVB - Bored Pile BC5	15	06-Oct-14	22-Oct-14	10	C3 - 6D w/ holiday	0%					
SII-11080	Ssec II - MVB - Bored Pile BC3-B	15	24-Oct-14	10-Nov-14	10	C3 - 6D w/ holiday	0%					
SII-11200	Ssec II - MVB - Bored Pile BC7	15	30-Oct-14	15-Nov-14	10	C3 - 6D w/ holiday	0%					
SII-11210	Ssec II - MVB - Bored Pile BC9	15	18-Nov-14	04-Dec-14	10	C3 - 6D w/ holiday	0%					
SII-11240	Ssec II - MVB - Bored Pile BC18	15	24-Nov-14	10-Dec-14	10	C3 - 6D w/ holiday	0%					
<b>Group 2</b>												
SII-11100	Ssec II - MVB - Bored Pile BC10	15	20-Aug-14 A	06-Sep-14	4	C3 - 6D w/ holiday	60%					
SII-11110	Ssec II - MVB - Bored Pile BC6	15	29-Aug-14 A	11-Sep-14	4	C3 - 6D w/ holiday	40%					
SII-11120	Ssec II - MVB - Bored Pile BC14	13	13-Sep-14	27-Sep-14	4	C3 - 6D w/ holiday	0%					
SII-11130	Ssec II - MVB - Bored Pile BC3-A	13	19-Sep-14	06-Oct-14	4	C3 - 6D w/ holiday	0%					
SII-11140	Ssec II - MVB - Bored Pile BC16	15	08-Oct-14	24-Oct-14	4	C3 - 6D w/ holiday	0%					
SII-11150	Ssec II - MVB - Bored Pile BC8	14	14-Oct-14	29-Oct-14	4	C3 - 6D w/ holiday	0%					
SII-11160	Ssec II - MVB - Bored Pile BC17	15	31-Oct-14	17-Nov-14	4	C3 - 6D w/ holiday	0%					
SII-11170	Ssec II - MVB - Bored Pile BC11	15	06-Nov-14	22-Nov-14	4	C3 - 6D w/ holiday	0%					
SII-11180	Ssec II - MVB - Bored Pile BC15	15	25-Nov-14	11-Dec-14	4	C3 - 6D w/ holiday	0%					
<b>Section II A - CWB Tunnel &amp; Slip Road Structures and Facilities</b>												
<b>Section II A - CWB Tunnel - Design, Submission and Approval</b>												
SIIA10500	CWB Tunnel - Temp work design for bulk exc & ELS - ICE check & issue check cert	26	17-Apr-14 A	26-Sep-14	149	C3 - 7D w/o holiday	0%					
SIIA10520	CWB Tunnel - Temp work design for bulk exc & ELS - Eng comment & approve	26	24-Apr-14 A	26-Sep-14	149	C3 - 7D w/o holiday	10%					
<b>CWB CRIII &amp; A1</b>												
<b>CWB CRIII &amp; A1 - Dwall and Pile Construction</b>												
SIIA11060	Sec II A - CWB A1 - predrilling for Dwall and piles	55	23-Jun-14 A	07-Oct-14	23	C3 - 6D w/ holiday	47.27%					
SIIA11080	Sec II A - CWB A1 - carry out ground pretreatment for Dwall	60	19-Jul-14 A	27-Sep-14	23	C3 - 6D w/ holiday	61.67%					
SIIA11100	Sec II A - CWB A1 - construct Guide Wall	48	09-Aug-14 A	07-Oct-14	23	C3 - 6D w/ holiday	39.58%					



Activity ID	Activity Name	Orig Dur	Early Start	Early Finish	Total Float	Calendar	Activity % Complete	2014				2015
								Sep	Oct	Nov	Dec	Jan
SIIA11120	Sec II A - CWB A1 - construct temporary DWall and temp bulk head wall	76	30-Aug-14 A	01-Dec-14	0	C3 - 6D w/ holiday	0%					
SIIA11140	Sec II A - CWB A1 - Construct pre-bored H-pile	85	13-Sep-14	23-Dec-14	0	C3 - 6D w/ holiday	0%					
SIIA11180	Sec II A - CWB A1 - D-wall grout curtain / contact grout	45	17-Oct-14	08-Dec-14	13	C3 - 6D w/ holiday	0%					
SIIA11220	Sec II A - CWB A1 - D-wall Sonic test	60	27-Sep-14	08-Dec-14	13	C3 - 6D w/ holiday	0%					
SIIA11240	Sec II A - CWB A1 - install dewater/ recharge / observation well	25	17-Nov-14	15-Dec-14	7	C3 - 6D w/ holiday	0%					
<b>CWB A2 &amp; B</b>												
<b>CWB A2 &amp; B - Dwall Construction</b>												
SIIA11460	Sec II A - CWB B: Predrilling for Dwall & piles	75	06-Aug-14 A	04-Nov-14	5	C3 - 6D w/ holiday	29.33%					
SIIA11480	Sec II A - CWB B: ground treatment	60	08-Sep-14	19-Nov-14	5	C3 - 6D w/ holiday	0%					
SIIA11500	Sec II A - CWB B: construct Guide Wall	30	08-Sep-14	15-Oct-14	5	C3 - 6D w/ holiday	0%					
SIIA11520	Sec II A - CWB B: Construct DWall and barrette (1.2m thk on rock) in Relieve Measure Area	83	10-Sep-14	17-Dec-14	5	C3 - 6D w/ holiday	0%					
SIIA11580	Sec II A - CWB B: Dwall sonic test / interface core	120	31-Oct-14	28-Mar-15	62	C3 - 6D w/ holiday	0%					
SIIA11600	Sec II A - CWB B: Dwall grout curtain / contact grout	120	31-Oct-14	28-Mar-15	62	C3 - 6D w/ holiday	0%					
SIIA13340	Sec II A - CWB A2(1): Predrilling for Dwall & piles	54	25-Sep-14	28-Nov-14	36	C3 - 6D w/ holiday	0%					
SIIA13360	Sec II A - CWB A2(1): ground pretreatment	46	04-Oct-14	26-Nov-14	36	C3 - 6D w/ holiday	0%					
SIIA13380	Sec II A - CWB A2(1): Guide Wall	60	05-Nov-14	16-Jan-15	36	C3 - 6D w/ holiday	0%					
<b>CWB C</b>												
<b>CWB C - Dwall Construction</b>												
SIIA11880	Sec II A - CWB CW: Predrilling for Dwall & piles	70	04-Aug-14 A	06-Oct-14	35	C3 - 6D w/ holiday	60%					
SIIA11900	Sec II A - CWB CW: ground Pre-treatment	70	01-Sep-14	24-Nov-14	35	C3 - 6D w/ holiday	0%					
SIIA11920	Sec II A - CWB CW: Guide Wall	60	19-Sep-14	29-Nov-14	35	C3 - 6D w/ holiday	0%					
SIIA12960	Sec II A - CWB CE: Predrilling for Dwall	90	28-Jul-14 A	15-Oct-14	102	C3 - 6D w/ holiday	60%					
SIIA15000	Sec II A - CWB CE: extract existing pipe pile	52	01-Nov-14	03-Jan-15	136	C3 - 6D w/ holiday	0%					
<b>CWB C - Exhaust Duct</b>												
SIIA12820	Sec II A - Exhaust Duct at Slip Rd3: Predrilling for Piles	26	16-Oct-14	14-Nov-14	260	C3 - 6D w/ holiday	0%					
<b>Section VI A - Box Culvert La, L1 &amp; FRP-L Construction</b>												
<b>Sec VI A - Box Culvert La bay 1-3 and Roadwork</b>												
<b>Box Culvert La Bay 1-3</b>												
CUL10480	Sec VI A - Area 1 - Culvert L bay 1-3 - excavation and ELS installation	90	14-Mar-14 A	06-Sep-14	-27	C3 - 6D w/ holiday	93.33%					
CUL10540	Sec VI A - Area 1 - Culvert L bay 1-3 - construct bay 3 - wall	9	25-Aug-14 A	10-Sep-14	-61	C3 - 6D w/ holiday	11.11%					
CUL10560	Sec VI A - Area 1 - Culvert L bay 1-3 - construct bay 3 - top slab	8	11-Sep-14	19-Sep-14	-55	C3 - 6D w/ holiday	0%					
CUL10570	Sec VI A - Area 1 - Culvert L bay 3 wall and roof slab - curing, backfill and remove upper layer of strut	9	20-Sep-14	30-Sep-14	-55	C3 - 6D w/ holiday	0%					
CUL10600	Sec VI A - Area 1 - Culvert L bay 1-3 - construct bay 2 - base slab	6	03-Oct-14	09-Oct-14	-55	C3 - 6D w/ holiday	0%					
CUL10610	Sec VI A - Area 1 - Culvert L bay 2 base slab - curing, backfill and remove upper layer of strut	5	10-Oct-14	15-Oct-14	-55	C3 - 6D w/ holiday	0%					
CUL10620	Sec VI A - Area 1 - Culvert L bay 1-3 - construct bay 2 - wall	8	16-Oct-14	24-Oct-14	-53	C3 - 6D w/ holiday	0%					
CUL10640	Sec VI A - Area 1 - Culvert L bay 1-3 - construct bay 2 - top slab	8	21-Oct-14	29-Oct-14	-53	C3 - 6D w/ holiday	0%					
CUL10650	Sec VI A - Area 1 - Culvert L bay 2 wall and top slab - curing, backfill and remove upper layer of strut	9	30-Oct-14	08-Nov-14	-52	C3 - 6D w/ holiday	0%					
CUL10660	Sec VI A - Area 1 - Culvert L bay 1-3 - construct bay 1 - base slab	6	14-Oct-14	20-Oct-14	-55	C3 - 6D w/ holiday	0%					
CUL10670	Sec VI A - Area 1 - Culvert L bay 1 base slab - curing, backfill and remove upper layer of strut	5	21-Oct-14	25-Oct-14	-55	C3 - 6D w/ holiday	0%					
CUL10675	Sec VI A - Area 1 - Culvert L bay 1 invert slab connected to existing culvert	5	27-Oct-14	31-Oct-14	-55	C3 - 6D w/ holiday	0%					
CUL10680	Sec VI A - Area 1 - Culvert L bay 1-3 - construct bay 1 - wall	9	01-Nov-14	11-Nov-14	-55	C3 - 6D w/ holiday	0%					



Activity ID	Activity Name	Orig Dur	Early Start	Early Finish	Total Float	Calendar	Activity % Complete	2014					2015
								Sep	Oct	Nov	Dec	Jan	
CUL10700	Sec VI A - Area 1 - Culvert L bay 1-3 - construct bay 1 - top slab	8	04-Nov-14	12-Nov-14	-55	C3 - 6D w/ holiday	0%						
CUL10703	Sec VI A - Area 1 - Culvert L bay 2 wall and roof slab - curing, backfill and remove upper layer of strut	5	13-Nov-14	18-Nov-14	-55	C3 - 6D w/ holiday	0%						
CUL10705	Sec VI A - Area 1 - Culvert L bay 1-3 - construct manhole DO-01; IM-01	6	17-Nov-14	22-Nov-14	-55	C3 - 6D w/ holiday	0%						
CUL10720	Sec VI A - Area 1 - Culvert L bay 1-3 - backfill to pavement formation	12	24-Nov-14	06-Dec-14	-55	C3 - 6D w/ holiday	0%						
<b>Section VI A - Area 2 - Lung King Street Roadwork &amp; Utilities</b>													
SVIA10040	Sec VI A - Area 1 - Summary of Box Culvert La Construction	136	11-Nov-13 A	23-Dec-14	-55	C3 - 6D w/ holiday	30.15%						
SVIA10080	Sec VI A - Area 2 - Reinstate the area	50	07-Nov-14	07-Jan-15	-61	C3 - 6D w/ holiday	0%						
<b>Sec VI C - Box Culvert La bay 4 and Roadwork</b>													
CUL11570	Sec VI C - Culvert L - bay 4 - sheetpile, ELS & Excavation	45	06-Jan-14 A	01-Nov-14	23	C3 - 6D w/ holiday	0%						
CUL11580	Sec VI C - Culvert L - bay 4 (south half) - construct base slab	6	03-Nov-14	08-Nov-14	23	C3 - 6D w/ holiday	0%						
CUL11600	Sec VI C - Culvert L - bay 4 (south half) - construct wall and roof	12	10-Nov-14	22-Nov-14	23	C3 - 6D w/ holiday	0%						
CUL11605	Sec VI C - Culvert L - bay 4 (south half) - curing and remove internal formwork	24	24-Nov-14	20-Dec-14	23	C3 - 6D w/ holiday	0%						
CUL11645	Sec VI C - Culvert L - bay 4 (north half) - drive pipe pile	24	24-Nov-14	20-Dec-14	35	C3 - 6D w/ holiday	0%						
<b>Box Culvert L1 &amp; FRP-L Construction (Bay 5 - Bay 13)</b>													
<b>Box Culvert L1 &amp; FRP-L - Bay 5 to 7</b>													
CUL10010	Drainage Impact Assessment for ex. box culvert L diversion - Eng, DSD comment and approve	60	22-Jul-13 A	26-Sep-14	103	C3 - 7D w/o holiday	56.67%						
CUL10015	Culvert L - form temp opening at existing box culvert Bay 4 for temp flow diversion	35	01-Sep-14	14-Oct-14	1267	C3 - 6D w/ holiday	0%						
CUL10275	Sec VI C - Culvert L - bay 5,6,7 - erect temp platform for predrilling	65	13-Sep-14	29-Nov-14	30	C3 - 6D w/ holiday	0%						
CUL10280	Sec VI C - Culvert L - bay 5,6,7 - predrilling	45	15-Oct-14	05-Dec-14	30	C3 - 6D w/ holiday	0%						
CUL10800	Sec VI C - Culvert L - bay 7 - construct pre-bored H-pile	30	31-Oct-14	04-Dec-14	30	C3 - 6D w/ holiday	0%						
CUL10820	Sec VI C - Culvert L - bay 6 - construct pre-bored H-pile	30	14-Nov-14	18-Dec-14	30	C3 - 6D w/ holiday	0%						
CUL10868	Sec VI C - Culvert L - bay 5-7 - Form Dry Dock for precast culvert units	75	14-Aug-14 A	12-Nov-14	48	C3 - 6D w/ holiday	20%						
CUL10870	Sec VI C - Culvert L - bay 5-7 - Construct bottom slabs for precast culvert units	15	13-Nov-14	29-Nov-14	48	C3 - 6D w/ holiday	0%						
<b>Section VI B - Area 8</b>													
<b>Area 8 - Demolish Ex. Cooling Water Pumping Station</b>													
SVIB10580	Sec VI B - trim down existing seawall	25	02-Aug-14 A	01-Sep-14	0	C3 - 6D w/ holiday	96%						
SVIB10600	Sec VI B - backfill and compaction to formation level	14	20-Aug-14 A	04-Sep-14	0	C3 - 6D w/ holiday	87.14%						
SVIB10620	Achievement of Section VIB of the Works	0		04-Sep-14	0	C3 - 7D w/o holiday	0%						
<b>Section VI C - Area 3, 6, 8A &amp; 8C</b>													
<b>Area 8A &amp; 8C - Seawall Modification (Reviewed)</b>													
<b>Design Submission &amp; Approval</b>													
PRS-1004	Sec VI C - Temp Work Design for Seawall Modification & MTR Pump Room Stabilization - Engineer / MTR comment and approve	28	02-Apr-14 A	30-Sep-14	35	C3 - 6D w/ holiday	10.71%						
<b>Tenders for Sub-contractor and Procurement</b>													
PCU60310	Sec VI C - Prepare Sub-contract for Seawall Modification and Procurement of Materials	90	14-Nov-13 A	26-Sep-14	4	C3 - 6D w/ holiday	75.56%						
PCU60320	Sec VI C - Assessment and Award of Sub-contract for Seawall Modification	53	27-Sep-14	29-Nov-14	4	C3 - 6D w/ holiday	0%						
<b>MTR Pump Room Stabilization (Reviewed)</b>													
PRS-1020	Sec VI C - Place counter weight on top of MTR pump house	24	03-Oct-14	30-Oct-14	35	C3 - 6D w/ holiday	0%						
PRS-1030	Sec VI C - Trim existing rubble mound	27	31-Oct-14	01-Dec-14	35	C3 - 6D w/ holiday	0%						
<b>Area 6 - Box Culvert bay 5-6</b>													
SVIC10000	Sec VI C - [Summary] Construct Box Culvert Bay 5-6	109	13-Nov-14	28-Mar-15	30	C3 - 6D w/ holiday	0%						
<b>Area 3 - Box Culvert bay 4 and Roadwork</b>													



Activity ID	Activity Name	Orig Dur	Early Start	Early Finish	Total Float	Calendar	Activity % Complete	2014				2015
								Sep	Oct	Nov	Dec	Jan
SVIC10220	Sec VI C - [Summary] Construct Box Culvert Bay 4 in Area 3	116	06-Jan-14 A	24-Mar-15	23	C3 - 6D w/ holiday	0%					
<b>Section VI D - Area 8B &amp; 10</b>												
<b>WDII Box 1 Construction (Reviewed)</b>												
<b>WDII Box 1 Submission and Approval / Material Procurement</b>												
PCU60410	Sec VI D - WD II Box 1 - Prepare Subcontract for Box 1 structure	27	01-Sep-14	27-Sep-14	241	C3 - 7D w/o holiday	0%					
S0721040	Sec VI D - WD II Box 1 - temp work design - ICE check and issue check cert	28	06-Aug-14 A	12-Sep-14	256	C3 - 7D w/o holiday	57.14%					
S0721060	Sec VI D - WD II Box 1 - temp work design - Engineer comment and approve	28	06-Aug-14 A	20-Sep-14	248	C3 - 7D w/o holiday	28.57%					
S0721070	Sec VI D - WD II Box 1 - method statement and temp work design - MTR comment and approve	52	21-Sep-14	11-Nov-14	1541	C3 - 7D w/o holiday	0%					
S0721080	Sec VI D - WD II Box 1 - Prepare and submit method statement	51	21-Sep-14	10-Nov-14	253	C3 - 7D w/o holiday	0%					
S0721090	Sec VI D - WD II Box 1 - method statement - Engineer comment and approve	28	11-Nov-14	08-Dec-14	253	C3 - 7D w/o holiday	0%					
<b>Section VII - Remainder Works</b>												
<b>Tenders for Sub-contract and Material Procurement</b>												
PCU70010	Sec VII - Prepare Sub-contract for removing interim landing steps	90	08-Nov-14	05-Feb-15	35	C3 - 7D w/o holiday	0%					
<b>Section VIII - Landscape Softworks</b>												
<b>Soft Landscaping Works</b>												
SVIII10020	Sec VIII - Tree Felling/Transplanting at Portion 2 & 2A	90	20-Nov-13 A	11-Mar-15	114	C3 - 6D w/ holiday	0%					
<b>Section X - Protection &amp; Preservation of Trees</b>												
<b>Soft Landscaping Works</b>												
SX10020	Sec X - Protection & Preservation of Trees	1632	31-Jan-13 A	20-Jul-17	0	C3 - 7D w/o holiday	35.42%					

Activity ID	Activity Name	OD	RD	Start	Finish	Total Float	Calendar	2014					2015
								Sep 57	Oct 58	Nov 59	Dec 60	Jan 61	
<b>Wan Chai Development Phase II - Central - Wan Chai Bypass at Wan Chai East (dd 20-Sep-14)</b>													
<b>Programme Milestones (Revised up to EOTO No.10 Issued on 29-Nov-13)</b>													
<b>Contractual Completion Dates</b>													
KDC0110	Section 7 Works (831 days) - Box Culvert N1 & Works at Aea 7 (7-May-12)	0	0	20-Sep-14	20-Sep-14	-222	Calendar Day						
<b>Soft Landscaping &amp; Establishment Key Dates</b>													
KDC0140	Section 8C Works (1473 days) - Landscape Softworks in Area 8 (10-Feb-14)	0	0	20-Sep-14	20-Sep-14	-222	Calendar Day						
<b>Forecast Completion Dates</b>													
<b>Soft Landscaping &amp; Establishment Key Dates</b>													
KDF0140	Section 8C Works (1473 days) - Landscape Softworks in Area 8	0	0	19-Dec-14	19-Dec-14	-312	Calendar Day						
<b>Preliminaries</b>													
<b>Critical Procurement &amp; Site Delivery</b>													
PRE-PRO-1100A	GRP Roof Panel for Temp Covered Walkway (Type 1)	60	21	15-Jun-14 A	11-Oct-14	1473	Calendar Day						
PRE-PRO-1100B	GRP Roof Panel for Temp Covered Walkway (Type 2)	60	21	15-Jun-14 A	11-Oct-14	1473	Calendar Day						
<b>Section 3 of the Works - Re-provisioning of Government Helipad and Public Toilet</b>													
<b>Outstanding Works</b>													
S3-0070-1499	Reinstatement of armour rock, retaining walls & new covered walkway along Expo Drive East	254	25	11-Aug-12 A	22-Oct-14	1173	HK Working Day						
<b>Section 4A of the Works - Cooling Water Pumping System for Sun Hung Kai Centre (P8)</b>													
<b>Cooling Mains Work above Tunnel Portion &amp; connecting to Pump Station</b>													
S4A-0900	Outstanding Works	365	148	16-Feb-14 A	15-Feb-15	1346	Calendar Day						
<b>Section 4B of the Works - Cooling Water Pumping System for China Resources Building (P9)</b>													
<b>Cooling Mains Work above Tunnel Portion &amp; connecting to Pump Station</b>													
S4B-0900	Outstanding Works	365	10	01-Oct-13 A	30-Sep-14	1484	Calendar Day						
<b>Section 4C of the Works - Cooling Water Pumping System for Great Eagle Centre / Harbour Centre (P7)</b>													
<b>Cooling Mains Work above Tunnel Portion &amp; connecting to Pump Station</b>													
S4C-0900	Outstanding Works	365	61	21-Nov-13 A	20-Nov-14	1433	Calendar Day						
<b>Section 5 of the Works - WSD Salt Water Pumping System</b>													
<b>Salt Water Intake Culvert Construction</b>													
<b>Bay 6 - Bay 18: Ex-Pet Garden &amp; Hung Hing Road</b>													
S5-100-3333	Backfilling to Bay 6 to Bay 11 (2,000m3; 150m3/d)	23	7	20-Apr-13 A	29-Sep-14	-707	HK Working Day						
<b>Overall Testing &amp; Commissioning of Re-provisioned Salt Water Intake System</b>													
S5-0900	Outstanding Works	365	166	06-Mar-14 A	05-Mar-15	1328	Calendar Day						
<b>Section 7 of the Works - Box Culvert N1 &amp; Flood Relief System</b>													
<b>Box Culvert and Flood Relief System Construction</b>													
S7-191212-260	Backfilling for 1050mm FRP installation & Strut Removal	4	4	22-Sep-14	26-Sep-14	-339	HK Working Day						
<b>Works in Area 7</b>													
S7-1700	D-Wall Trimming, Drain Installation & Backfilling to Ground Level (13,500m3; 1,000m3/d)	27	16	05-Sep-14 A	06-Oct-14	-882	Calendar Day						
S7-1800	Completion of Tunnel Portion 1 Backfilling	0	0	05-Sep-14 A	06-Oct-14	-882	Calendar Day						
<b>Transformer Building for Dining Services at Ferry Pier (VO116)</b>													
<b>Civil Works</b>													
S7-TB-2000	Lay 500mm thk. Rubble Mound	2	2	07-Oct-14	08-Oct-14	-907	HK Working Day						
S7-TB-2010	Blinding Layer	1	1	09-Oct-14	09-Oct-14	-907	HK Working Day						
S7-TB-2020	Base Slab Construction (9.3m x 4.9m x 1m thick)	7	7	10-Oct-14	17-Oct-14	-907	HK Working Day						
S7-TB-2030	Concrete Plinth, Side Wall, Beam & Corbel	14	14	21-Oct-14	05-Nov-14	-907	HK Working Day						
S7-TB-2040	Concrete In-Fill at Basement	3	3	10-Nov-14	12-Nov-14	-907	HK Working Day						
S7-TB-2050	Outer Wall & Partition Wall	21	21	13-Nov-14	06-Dec-14	-907	HK Working Day						
S7-TB-2060	Scaffolding Erection & Roof Construction	21	21	08-Dec-14	03-Jan-15	-907	HK Working Day						
S7-TB-2070	Curing	14	14	04-Jan-15	17-Jan-15	-1131	Calendar Day						
S7-TB-2080	Formwork Removal & Scaffolding Dismantling	4	4	19-Jan-15	22-Jan-15	-907	HK Working Day						
<b>E&amp;M Works</b>													
S7-TB-4100	22kV Cable across HHR to Transformer Building by HEC	45	45	07-Oct-14	20-Nov-14	-1016	Calendar Day						
<b>Section 8A of the Works - Re-provisioning of Wan Chai Ferry Pier in Area 8</b>													
<b>ABWF &amp; E&amp;M Installation</b>													
<b>Roof</b>													
S8A-BS-4010	E&M Installation	212	30	10-Sep-13 A	20-Oct-14	1464	Calendar Day						
<b>Works in Area 8 - ABWF Works at Observation Deck of Ferry Pier</b>													
S8B-FP-01100	Roof Finishes & Misc. ABWF Installation	120	30	28-Oct-13 A	20-Oct-14	1464	Calendar Day						
S8B-FP-01300	Handrail & Glass Balustrade Installation	45	7	21-Dec-13 A	27-Sep-14	1487	Calendar Day						
<b>Section 9B of the Works - CWB Tunnel Structure (CH3400 - CH3796)</b>													
<b>Tunnel Portion 2 (CH3425-CH3500)</b>													
<b>Foundation</b>													
S9B-T2-1125	Installation of Pump Test Equipment	77	24	11-Jun-14 A	21-Oct-14	117	HK Working Day						
S9B-T2-1130	Tunnel portion 2 Pump Test	35	12	11-Jun-14 A	07-Oct-14	147	Calendar Day						
<b>CWB Structural Works</b>													
S9B-T2-2000	Tunnel portion 2 ELSW excavation (62,500m3; 500m3/d)	125	105	06-Aug-14 A	27-Jan-15	-9	HK Working Day						
<b>Tunnel Portion 3 &amp; Tunnel Portion 4 (CH3630-CH3790)</b>													
<b>Foundation</b>													
<b>Stage 2 - Southern Wall after HHR Flyover Diversion (Stage 1) (C130A-P131; P144-C154)</b>													
S9B-T34-1230C	Pre-grouting & Guidewall for P147-P154	28	14	11-Feb-14 A	04-Oct-14	-271	Calendar Day						



CHUN WO - CRGL JOINT VENTURE

- █ Remaining Work
- █ Actual Work
- █ Summary Bar
- █ Critical Remaining Work
- ◆ Milestone

**CEDD CONTRACT NO. HK/2009/02**  
**Wan Chai Development Phase II - Central-Wan Chai Bypass at Wan Chai East (Contract 2)**  
**3-MONTH ROLLING PROGRAMME (dd 20-Sep-14)**

Date	Revision	Checked	Approved
20-Sep-14	3MRP		
20-Feb-14	Baseline Prog		

Activity ID	Activity Name	OD	RD	Start	Finish	Total Float	Calendar	2014					2015	
								Sep 57	Oct 58	Nov 59	Dec 60	Jan 61		
S9B-T34-1260B	Bored Pile Construction (PS30-PS32; 14d/pile; 1 Rig)	42	14	07-Aug-14 A	04-Oct-14	-229	Calendar Day	Bored Pile Construction (PS30-PS32; 14d/pile; 1 Rig)						
S9B-T34-1250C	D-wall Construction along HHR slow lane (P147-C152, C154; 6d/Panel)	42	42	04-Jan-15	14-Feb-15	-362	Calendar Day	D-wall Construction along HHR slow lane (P147-C152, C154; 6d/Panel)						
<b>Stage 3 - Northern Wall after TWCR4 Reclamation (C88-C105)</b>								105	105	21-Sep-14	03-Jan-15	-362	Calendar Day	
S9B-T34-1435C	D-Wall Plant Mobilization after HHR Stage 2	21	21	21-Sep-14	11-Oct-14	-362	Calendar Day	D-Wall Plant Mobilization after HHR Stage 2						
S9B-T34-1430C	D-wall Construction at TWCR4 (C88-P94; P101-C105; 6d/Panel)	84	84	12-Oct-14	03-Jan-15	-362	Calendar Day	D-wall Construction at TWCR4 (C88-P94; P101-C105; 6d/Panel)						
<b>Stage 4 - Southern Wall after HHR Flyover Diversion (Stage 2) (P132-P143)</b>								96	96	22-Oct-14	25-Jan-15	-438	Calendar Day	
S9B-T34-1600	Complete Removal of Approach Ramp of Existing HHR Flyover	0	0	22-Oct-14		-438	Calendar Day	Complete Removal of Approach Ramp of Existing HHR Flyover						
S9B-T34-1610	Pre-drilling at HHR Flyover	26	26	22-Oct-14	16-Nov-14	-438	Calendar Day	Pre-drilling at HHR Flyover						
S9B-T34-1620	Pre-grouting at HHR Flyover	21	21	17-Nov-14	07-Dec-14	-389	Calendar Day	Pre-grouting at HHR Flyover						
S9B-T34-1630	Guide Wall construction at HHR Flyover	21	21	17-Nov-14	07-Dec-14	-389	Calendar Day	Guide Wall construction at HHR Flyover						
S9B-T34-1650	Bored Pile Construction (PS34-PS38; 14d/pile; 1 Rig)	70	70	17-Nov-14	25-Jan-15	-438	Calendar Day	Bored Pile Construction (PS34-PS38; 14d/pile; 1 Rig)						
<b>Temp Works for HHR Flyover Diversion (Stage 2)</b>								28	28	22-Sep-14	26-Oct-14	-295	Calendar Day	
<b>At-Grade Roadworks</b>								28	28	22-Sep-14	26-Oct-14	-295	Calendar Day	
S9B-TTA-4500	Demolish of Approach Ramp of Existing HHR Flyover for D-Wall Construction	24	24	22-Sep-14	21-Oct-14	-352	HK Working Day	Demolish of Approach Ramp of Existing HHR Flyover for D-Wall Construction						
S9B-TTA-4600	Utility Diversion for D-Wall near Existing HHR Flyover Approach Ramp	35	35	22-Sep-14	26-Oct-14	-368	Calendar Day	Utility Diversion for D-Wall near Existing HHR Flyover Approach Ramp						
<b>Section 11 of the Works - Remainder of Works</b>								135	124	30-Aug-14 A	25-Feb-15	-330	Calendar Day	
<b>Marine Works at WCR3</b>								135	124	30-Aug-14 A	25-Feb-15	-330	Calendar Day	
S11-R3-1000	Demolition of Existing Ferry Pier	60	59	30-Aug-14 A	01-Dec-14	-314	HK Working Day	Demolition of Existing Ferry Pier						
S11-R3-1100	Mobilisation of Dredger of 1st Stage Dredging	2	2	21-Sep-14	22-Sep-14	-413	Calendar Day	Mobilisation of Dredger of 1st Stage Dredging						
S11-R3-0500A	Fabrication of Caisson Seawalls for WCR3 Reclamation (1st Stage - 2 Nos.)	60	60	21-Sep-14	19-Nov-14	-407	Calendar Day	Fabrication of Caisson Seawalls for WCR3 Reclamation (1st Stage - 2 Nos.)						
S11-R3-1200	1st Stage Dredging at Permanent Seawall Area by Night Work (60,000m3 @ 2,000m3/d)	30	30	23-Sep-14	29-Oct-14	-333	Working Day	1st Stage Dredging at Permanent Seawall Area by Night Work (60,000m3 @ 2,000m3/d)						
S11-R3-1300	1st Stage Rockfilling for Seawall by Night Work (24,000m3 @ 1000m3/d)	24	24	29-Oct-14	22-Nov-14	-415	Calendar Day	1st Stage Rockfilling for Seawall by Night Work (24,000m3 @ 1000m3/d)						
S11-R3-0500B	Fabrication of Caisson Seawalls for WCR3 Reclamation (2nd Stage - 3 Nos.)	90	90	20-Nov-14	17-Feb-15	-407	Calendar Day	Fabrication of Caisson Seawalls for WCR3 Reclamation (2nd Stage - 3 Nos.)						
S11-R3-1400	Placing leveling stones to -6.0mPD (1500m2 @ 40m2/d)	38	38	22-Nov-14	30-Dec-14	-415	Calendar Day	Placing leveling stones to -6.0mPD (1500m2 @ 40m2/d)						
S11-R3-1600	2nd Stage Dredging except the Existing Wan Chai Ferry Pier (20,000m3 @ 1,000m3/d)	20	20	02-Dec-14	21-Dec-14	-390	Calendar Day	2nd Stage Dredging except the Existing Wan Chai Ferry Pier (20,000m3 @ 1,000m3/d)						
S11-R3-1500	Installation of Permanent Seawall (3 nos.) & Rockfilling behind seawall	16	16	30-Dec-14	15-Jan-15	-415	Calendar Day	Installation of Permanent Seawall (3 nos.) & Rockfilling behind seawall						
S11-R3-1700	Reclamation from -14 mPD to -2.0mPD by Hopper (121,000m3 @ 3,000m3/d)	41	41	15-Jan-15	25-Feb-15	-415	Calendar Day	Reclamation from -14 mPD to -2.0mPD by Hopper (121,000m3 @ 3,000m3/d)						
<b>Soft Landscaping &amp; Establishment Works</b>								2375	707	24-Feb-10 A	27-Aug-16	0	Calendar Day	
<b>Section 8C of the Works - Landscape Softworks in Area 8</b>								90	90	21-Sep-14	19-Dec-14	-312	Calendar Day	
S8C-0010	Carry out landscape soft work on new ferry pier	90	90	21-Sep-14	19-Dec-14	-312	Calendar Day	Carry out landscape soft work on new ferry pier						
<b>Section 8D of the Works - Establishment Works in Area 8</b>								365	365	20-Dec-14	19-Dec-15	-312	Calendar Day	
S8D-0010	Carry out establishment work on new ferry pier	365	365	20-Dec-14	19-Dec-15	-312	Calendar Day	Carry out establishment work on new ferry pier						
<b>Section 12 of the Works - Protection and Preservation of Existing Trees</b>								2375	707	24-Feb-10 A	27-Aug-16	0	Calendar Day	
S12-0010	Protection and preservation of existing trees	2375	707	24-Feb-10 A	27-Aug-16	0	Calendar Day	Protection and preservation of existing trees						

Activity ID	Activity Name	Original Duration	Start	Finish	2014				2015
					Sep	Oct	Nov	Dec	Jan
<b>HY/2010/08: CWB-SR8 Three Months Rolling Programme_updated up to 20140920</b>									
<b>Works in TS3</b>									
<b>TS3 East &amp; West Reclamation Works</b>									
<b>TS3E - Reclamation (Advance Works)</b>									
<b>TS3E - General</b>									
TS3E.MW.1160	TS3 East - General Fill (Stage 1)	24	07-Oct-14	30-Oct-14					
TS3E.MW.1180	TS3 East - Handover to D-wall	0		30-Oct-14					
TS3E.MW.1170	TS3 East - General Fill (Stage 2)	26	06-Nov-14	01-Dec-14					
<b>TS3E - South</b>									
TS3E.MW.1090	TS3E South - Rockfill	19	10-Aug-14 A	26-Sep-14					
TS3E.MW.1100	TS3E South - Seawall Block Installation	25	13-Sep-14 A	06-Oct-14					
TS3E.MW.1090A	TS3E South - Levelling of Rock Fill	4	27-Sep-14	30-Sep-14					
<b>TS3E - North (Remaining)</b>									
TS3E.MW.N.100	Rockfill & Levelling - Phase 1	10	19-Sep-14*	28-Sep-14					
TS3E.MW.N.101	Rockfill & Levelling - Phase 2	8	29-Sep-14	06-Oct-14					
TS3E.MW.N.102	Levelling (TS3E North)	4	07-Oct-14	10-Oct-14					
TS3E.MW.N.104	TS3E North to Bay 14 - Seawall Block Installation	26	11-Oct-14	05-Nov-14					
<b>TS3W - Reclamation Works (new scheme)</b>									
TS3W.MW.1170	C15 - Move TS3(W) Yachts - Phase II	12	19-Sep-14	04-Oct-14					
TS3W.MW.1160	C15 - Complete TZ4	0		01-Nov-14 A					
<b>TS3W - North</b>									
TS3W.MW.2010	TS3W North - Phase 1 Dredging	14	05-Oct-14	18-Oct-14					
TS3W.MW.2010	TS3W North - Phase 2 Dredging	15	12-Oct-14	26-Oct-14					
TS3W.MW.2010	TS3W North - HIS of Dredging	1	27-Oct-14	27-Oct-14					
TS3W.MW.2010	Inspection of Founding	2	28-Oct-14	29-Oct-14					
TS3W.MW.2040	TS3W North - Rockfill	21	30-Oct-14	19-Nov-14					
TS3W.MW.2040	TS3W North - Levelling	4	20-Nov-14	23-Nov-14					
TS3W.MW.2050	TS3W North - Phase 1 Seawall Block Installation	14	24-Nov-14	07-Dec-14					
<b>TS3W - (Mid-Point)</b>									
TS3W.MW.2160	TS3W - Dredging (Type 1 & 2)	30	19-Sep-14	18-Oct-14					
TS3W.MW.2170	TS3W - Dredging (Type 1 & 2) - HIS	1	19-Oct-14	19-Oct-14					
TS3W.MW.2180	Inspection of Founding	3	20-Oct-14	22-Oct-14					
<b>TS3W - South</b>									
TS3W.MW.2070	TS3W South - Dredging (Type 3)	30	21-Oct-14	19-Nov-14					



**中國建築工程(香港)有限公司**  
CHINA STATE CONSTRUCTION ENGRG. (HONG KONG) LTD.

- Actual Work
- Remaining Work
- Critical Remaining Work
- ◆ Milestone

Date	Revision	Checked	Approved
20-Sep-14	Updated to 20th September 2014	DML/WC	



Activity ID	Activity Name	Original Duration	Start	Finish	2014					2015	
					Sep	Oct	Nov	Dec	Jan		
TS3W.MW.2070	TS3W South - Dredging (Type 1 & 2)	20	10-Nov-14	29-Nov-14							TS3W South - Dredging (Type 1 & 2)
TS3W.MW.2070	TS3W South - HIS of Dredging	1	30-Nov-14	30-Nov-14							TS3W South - HIS of Dredging
TS3W.MW.2070	TS3W South - Inspection of Founding	1	01-Dec-14	01-Dec-14							TS3W South - Inspection of Founding
TS3W.MW.2080	TS3W South - Rockfill	14	02-Dec-14	15-Dec-14							TS3W South - Rockfill
TS3W.MW.2080	TS3W South - Levelling	3	16-Dec-14	18-Dec-14							TS3W South - Level
TS3W.MW.2090	TS3W South - Seawall Block Installation	16	19-Dec-14	03-Jan-15							TS
<b>Works for Box Culvert Q &amp; Water Intake</b>											
<b>Water Intake</b>											
<b>Stage 1 - Water Intake Works</b>											
TS3_1170.10	Install Interim Water Tank & Lay Piping along Seawall	18	07-Aug-14 A	22-Sep-14							Install Interim Water Tank & Lay Piping along Seawall
TS3_1170.20	Install Silt Screen & Sump Pump	2	23-Sep-14	24-Sep-14							Install Silt Screen & Sump Pump
TS3_1170.30	Install Interim Connection to WSD (Contingency Supply)	4	23-Sep-14	26-Sep-14							Install Interim Connection to WSD (Contingency Supply)
TS3_1180.10	Shut Down and Connect Water Intake to Interim System	1	27-Sep-14	27-Sep-14							Shut Down and Connect Water Intake to Interim System
TS3_1180.20	Test and Commission	2	29-Sep-14	30-Sep-14							Test and Commission
<b>Box Culvert Q</b>											
<b>Box Culvert Q Outfall Diversion</b>											
TS3_1145.20	Install Temporary Sheet Pile Wall Stage 1	30	13-Aug-14 A	30-Sep-14							Install Temporary Sheet Pile Wall Stage 1
TS3_1145.40	Install Strut / Lateral Support Between Sheet Pile Wall and Existing Seawall	12	20-Sep-14	06-Oct-14							Install Strut / Lateral Support Between Sheet Pile Wall and Existing Seawall
TS3_1145.20A	Install Temporary Sheet Pile Wall Stage 2	26	06-Oct-14	04-Nov-14							Install Temporary Sheet Pile Wall Stage 2
TS3_1145.30	Commence dredging behind sheet pile wall	0		06-Oct-14							Commence dredging behind sheet pile wall
TS3_1145.50	Construct Temporary Vertical Seawall (Stone Block) behind Sheet Pile Wall and continue with reclamation works	12	16-Oct-14	29-Oct-14							Construct Temporary Vertical Seawall (Stone Block) behind Sheet Pile Wall and
<b>Works in SR8 (Open Cut Method)</b>											
<b>SR8 - Cofferdam &amp; Cut &amp; Cover Tunnel Works</b>											
<b>SR8 East Bound - (Seaside to Victoria Road / IEC Central Divider)</b>											
<b>TTA Stage 0 - East Bound</b>											
<b>Stage 1B - East Bound (Seaside) (Ref. DRG. No.CDD/SR8/082)</b>											
SR8.EB.1251	Carry-out Stage 1B TAM Grout + Jet Grouting (26nos)	22	08-Aug-14 A	19-Sep-14							Carry-out Stage 1B TAM Grout + Jet Grouting (26nos)
SR8.EB.1252	Excavation Including Pipe Cutting Works(Row A)	6	06-Sep-14 A	19-Sep-14							Excavation Including Pipe Cutting Works(Row A)
SR8.EB.1256	Welding Capping Plates	3	20-Sep-14	22-Sep-14							Welding Capping Plates
SR8.EB.1253	Excavation Including Pipe Cutting Works(Row B)	1	20-Sep-14	20-Sep-14							Excavation Including Pipe Cutting Works(Row B)
SR8.EB.1254	Excavation Including Pipe Cutting Works(East Portion of Road Works)	2	20-Sep-14	21-Sep-14							Excavation Including Pipe Cutting Works(East Portion of Road Works)
SR8.EB.1255	Concrete Footing	2	22-Sep-14	23-Sep-14							Concrete Footing
SR8.EB.1257	Install Primary Beams	2	23-Sep-14	24-Sep-14							Install Primary Beams
SR8.EB.1258	Install Secondary Beams	2	24-Sep-14	25-Sep-14							Install Secondary Beams
SR8.EB.1259	Decking Construction	2	28-Sep-14	29-Sep-14							Decking Construction

Activity ID	Activity Name	Original Duration	Start	Finish	2014					2015	
					Sep	Oct	Nov	Dec	Jan		
SR8.EB.1260	Road Formation	1	01-Oct-14	01-Oct-14							
SR8.EB.1261	Temporary Road Furnitures - Lighting, Barrier, Drainage	2	02-Oct-14	03-Oct-14							
SR8.EB.1270	Install Temporary Traffic Directional Signs for TTA Stage 1	1	03-Oct-14	03-Oct-14							
SR8.EB.1262	Aphalt Laying	1	03-Oct-14	03-Oct-14							
<b>TTA Stage 1 - East Bound</b>											
<b>Stage 2 - East Bound (Ref. DRG. No.CDD/SR8/083)</b>											
SR8.EB.1310	Implement TTA Stage 1 - Traffic Diversion at East Bound (DRG Ref. 4843/011/021E)	0	05-Oct-14								
SR8.EB.1315	Excavate Trench and Expose underground utilities (Carriage way)	6	06-Oct-14	11-Oct-14							
SR8.EB.1320	Divert Gas Main to pre-laid Gas Main Pipe at Planter Area Gas Main Trough	18	13-Oct-14	01-Nov-14							
SR8.EB.1325	Protect and Shift HV 22kv Cable on carriage way (as required)	18	13-Oct-14	01-Nov-14							
SR8.EB.1327	Cut and By pass Drainage to the next (existing) collection point (MH)	18	13-Oct-14	01-Nov-14							
SR8.EB.1330	Carry out pre-boring work for stage 2 sheet pile	14	03-Nov-14	18-Nov-14							
SR8.EB.1340	Stage 2 - Sheet Pile Work	18	12-Nov-14	02-Dec-14							
SR8.EB.1350	Stage 2 - Pipe Piling Work	52	03-Dec-14	04-Feb-15							
<b>SR8 West Bound - Ch. 459.000 to 385.000 (Victoria Road / IEC Central Divider)</b>											
<b>TTA Stage 1 - West Bound</b>											
<b>Stage 2A - West Bound (Ref. DRG. No.CDD/SR8/086)</b>											
SR8.WB.2130	Pre-treatment Grouting	10	10-Jul-14 A	23-Sep-14							
SR8.WB.2030	Carry out Stage 2A Pipe Piling Work	42	21-Aug-14 A	27-Oct-14							
SR8.WB.2040	Carry out Stage 2A TAM Grout	14	27-Oct-14	12-Nov-14							
SR8.WB.2050	Trim Down Sheet Pile / Pipe Pile and construct Gas Main Trough	8	27-Oct-14	05-Nov-14							
SR8.WB.2060	Divert Gas Main to Gas Main Trough	6	05-Nov-14	12-Nov-14							
SR8.WB.2140	Testing of Gas Pipe	6	12-Nov-14	19-Nov-14							
<b>Stage 2B - West Bound (Ref. DRG. No.CDD/SR8/086)</b>											
SR8.WB.2070	Carry out Stage 2B Sheet Pile	7	19-Nov-14	27-Nov-14							
SR8.WB.2080	Carry out Stage 2B Pipe Piling	12	27-Nov-14	11-Dec-14							
SR8.WB.2090	Carry out Stage 2B TAM Grout	14	11-Dec-14	30-Dec-14							
SR8.WB.2100	Demolish Part (WB) Wing Wall of Abutment M	2	14-Dec-14	21-Dec-14							
SR8.WB.2120	Construct Temporary IEC West Bound Down Ramp	57	22-Dec-14	04-Mar-15							
<b>SR8 Ch.385.000 to Ch.317.500 - (Inside Victoria Park to Tunnel Portal)</b>											
<b>Stage 4 - SR8 Ch.385.000 to Ch317.500 (Tunnel Portal) (Ref. DRG. No.CDD/SR8/087)</b>											
SR8.VP.4010	Carry Out Stage 4 Sheet Pile Works	90	13-Mar-14 A	09-Oct-14							
SR8.VP.4020	Carry Out Stage 4 Pipe Piling Works	145	24-Jul-14 A	06-Feb-15							
<b>SR8 Ch 317.500 to Ch 210.000 - U-Structure &amp; Slab (Victoria Park)</b>											
<b>Excavation and Lateral Support</b>											

Activity ID	Activity Name	Original Duration	Start	Finish	2014					2015
					Sep	Oct	Nov	Dec	Jan	
SR8_2230	ELS - Excavation to formation level + Lateral Support	96	13-Jun-14 A	13-Dec-14	[Red bar from Sep to Dec]					ELS - Excavation to forma
<b>Tsing Fung St - RW &amp; Subway Extension &amp; Toe Wall at Hing Fat St</b>										
<b>Ret. Wall &amp; TF Subway Extension (Portion V)</b>										
<b>Retaining Wall RW8C at Tsing Fung Street (Portion V)</b>										
VP_1235	TFS New Ret. Wall -sheet pile (400 m2)	12	21-Jun-14 A	25-Sep-14	[Red bar from Sep to Oct]					TFS New Ret. Wall -sheet pile (400 m2)
VP_1240	TFS New Ret. Wall - excavation	42	26-Sep-14	15-Nov-14	[Red bar from Sep to Nov]					TFS New Ret. Wall - excavation
VP_1260	TFS New Ret. Wall - base slab	42	22-Oct-14	09-Dec-14	[Red bar from Oct to Dec]					TFS New Ret. Wall - base slab
VP_1290	TFS New Ret. Wall - wall stem + Railing	60	10-Dec-14	24-Feb-15	[Red bar from Dec to Jan 2015]					
<b>Retaining Wall + Toe Wall at Hing Fat Street</b>										
<b>Tree Transplanting at Portion VIII (Tree Zone 20) (6 trees)</b>										
VP_1700	Preparation and Site Hoarding	36	19-Sep-14	01-Nov-14	[Red bar from Sep to Nov]					Preparation and Site Hoarding
VP_1140.01	Transplanting <300mm dia trees (3months, 4nos) - Stage 1 root pruning	25	03-Nov-14	01-Dec-14	[Red bar from Nov to Dec]					Transplanting <300mm dia trees (3mon
VP_1140.02	Transplanting <300mm dia trees (3months, 4nos) - Stage 2 root pruning	25	02-Dec-14	02-Jan-15	[Red bar from Dec to Jan 2015]					Tra
<b>Works in Victoria Park</b>										
<b>Re-Provisioning Works</b>										
<b>Bowling Green Office</b>										
<b>BGO - Construction Works</b>										
VP_1180.14	BGO - Plinths on Roof + Parapet	12	15-Sep-14 A	29-Sep-14	[Green bar from Sep to Sep]					BGO - Plinths on Roof + Parapet
VP_1180.04	BGO - Roof Slab Waterproofing + Screeding	12	29-Sep-14	15-Oct-14	[Green bar from Sep to Oct]					BGO - Roof Slab Waterproofing + Screeding
VP_1190	BGO - ABWF	50	06-Oct-14	02-Dec-14	[Red bar from Oct to Dec]					BGO - ABWF
VP_1220	BGO - E&M Works	36	14-Oct-14	24-Nov-14	[Red bar from Oct to Nov]					BGO - E&M Works
VP_1250	BGO - T&C	4	25-Nov-14	28-Nov-14	[Red bar from Nov to Nov]					BGO - T&C
VP_1260.10	Submit Form 501 to FSD (Application for Inspection)	1	29-Nov-14	29-Nov-14	[Red bar at Nov]					Submit Form 501 to FSD (Application for I
VP_1250.40	Statutory Inspections by Other Authorities (EMSD, WSD, ASD)	30	29-Nov-14	28-Dec-14	[Red bar from Nov to Dec]					Statutory
VP_1260.20	FSD Inspection & Certification	29	30-Nov-14	28-Dec-14	[Red bar from Nov to Dec]					FSD Insp
VP_1270	BGO - Completion of KD4 - Works in Section1B	0		28-Dec-14	[Green diamond at Dec]					BGO - Co
<b>Tree Transplanting at Portion XIV (Victoria Park Open Space)</b>										
VP_1040	Tree Transplanting & Upkeep at Portion XIV	348	16-Oct-13 A	15-Dec-14	[Red bar from Oct to Dec]					Tree Transplanting & Up
VP_1280	Completion of KD 3 - Section 1A, Works in Portion XIV & XV	0		15-Dec-14	[Green diamond at Dec]					Completion of KD 3'- Se
<b>Mooring Components Upkeep (CBTS and ATS)</b>										
MAR_2000	Mooring Upkeep at Portion XIX(19) & XX(20) - ATS (if instructed by Engineer)	1399	21-Mar-13 A	17-Jan-17	[Red bar from Sep to Jan 2015]					
MAR_1000	Mooring Upkeep at Portion III (3) - CBTS	574	15-May-14 A	09-Dec-15	[Red bar from Sep to Dec 2015]					
MAR_3020	Mooring Upkeep at Portion X(10) & XVI(16) - CBTS	979	15-May-14 A	17-Jan-17	[Red bar from Sep to Jan 2015]					
<b>Works for Public Works Regional Laboratory (North Lantau)</b>										
<b>Maintenance and Upkeep of New PWRL (Portion XVII)</b>										

Activity ID	Activity Name	Original Duration	Start	Finish	2014					2015
					Sep	Oct	Nov	Dec	Jan	
					PWRL_1050	Maintenance/ Upkeep of New PWRL	1301	19-Jul-13 A	20-Nov-17	